



SRI BHARATHI

ENGINEERING COLLEGE FOR WOMEN

(Approved by AICTE, New Delhi and Affiliated to Anna University, Chennai)
Kaikkurichi, Pudukkottai -622 303

www.sbec.edu.in

NAAC DOCUMENTS



Quality Indicator Frame Work

Criterion – 2

Teaching-Learning and Evaluation

Submitted by

IQAC

Internal Quality Assurance Cell

Sri Bharathi Engineering College for Women



SRI BHARATHI ENGINEERING COLLEGE FOR WOMEN

(Approved by AICTE, New Delhi and Affiliated to Anna University, Chennai)

Kaikkurichi, Pudukkottai, Tamil Nadu – 622 303, India

Criteria 2

Teaching-Learning and Evaluation

350

Key Indicator- 2.6. Student Performance and Learning Outcome (90)

2.6.2 Attainment of POs and COs are evaluated (20)

2018-2019

ATTAINMENT EVALUATION OF POs & COs

COMPUTER SCIENCE AND ENGINEERING

Table of Content

S.No	Particulars	Page No
1	CO-PO-PSO Attainment Report	3 - 5
2	CO-PO Attainment Sample Sheet	6 - 9
3	Action taken Report	10



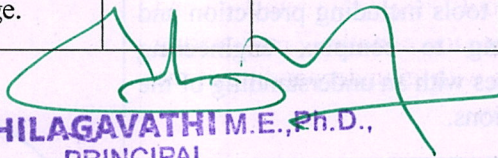
SRI BHARATHI ENGINEERING COLLEGE FOR WOMEN
(Approved by AICTE, New Delhi and Affiliated to Anna University, Chennai)
KAIKKURICHI, PUDUKKOTTAI-622-303

Department of Computer Science and Engineering
Academic year (2018 - 2019)
PO-PSO ATTAINMENT

PO/PSO	STATEMENT	TARGET	ATTAINED VALUE	ATTAINMENT %
PO1	Engineering knowledge: Apply the knowledge of mathematics, science, engineering fundamentals and an engineering specialization to the solution of complex engineering problems.	2.77	2.55	91.92%
PO2	Problem analysis: Identify, formulate, review research literature, and analyze complex engineering problems reaching substantiated conclusions using first principles of mathematics, natural sciences, and engineering sciences.	2.35	2.09	88.92%
PO3	Design/development of solutions: Design solutions for complex engineering problems and design system components or processes that meet the specified needs with appropriate consideration for the public health and safety, and the cultural, societal, and environmental considerations.	2.09	1.94	92.90%
PO4	Conduct investigations of complex problems: Use research-based knowledge and research methods including design of experiments, analysis and interpretation of data, and synthesis of the information to provide valid conclusions.	1.69	1.53	90.64%
PO5	Modern tool usage: Create, select, and apply appropriate techniques, resources, and modern engineering and IT tools including prediction and modeling to complex engineering activities with an understanding of the limitations.	1.74	1.32	75.82%

Dr. S.THILAGAVATHI M.E., Ph.D.
PRINCIPAL
SRI BHARATHI ENGINEERING
COLLEGE FOR WOMEN
Kaikkurichi - 622 303, Pudukkottai Dt.

PO6	The engineer and society: Apply reasoning informed by the contextual knowledge to assess societal, health, safety, legal and cultural issues and the consequent responsibilities relevant to the professional engineering practice.	1.87	1.66	88.87%
PO7	Environment and sustainability: Understand the impact of the professional engineering solutions in societal and environmental contexts, and demonstrate the knowledge of, and need for sustainable development.	1.62	1.37	84.64%
PO8	Ethics: Apply ethical principles and commit to professional ethics and responsibilities and norms of the engineering practice.	1.61	1.39	86.10%
PO9	Individual and team work: Function effectively as an individual, and as a member or leader in diverse teams, and in multidisciplinary settings.	1.44	1.34	93.26%
PO10	Communication: Communicate effectively on complex engineering activities with the engineering community and with society at large, such as, being able to comprehend and write effective reports and design documentation, make effective presentations, and give and receive clear instructions.	1.37	1.29	93.80%
PO11	Project management and finance: Demonstrate knowledge and understanding of the engineering and management principles and apply these to one's own work, as a member and leader in a team, to manage projects and in multidisciplinary environments.	1.22	1.08	88.25%
PO12	Life-long learning: Recognize the need for, and have the preparation and ability to engage in independent and life-long learning in the broadest context of technological change.	1.31	1.11	84.67%

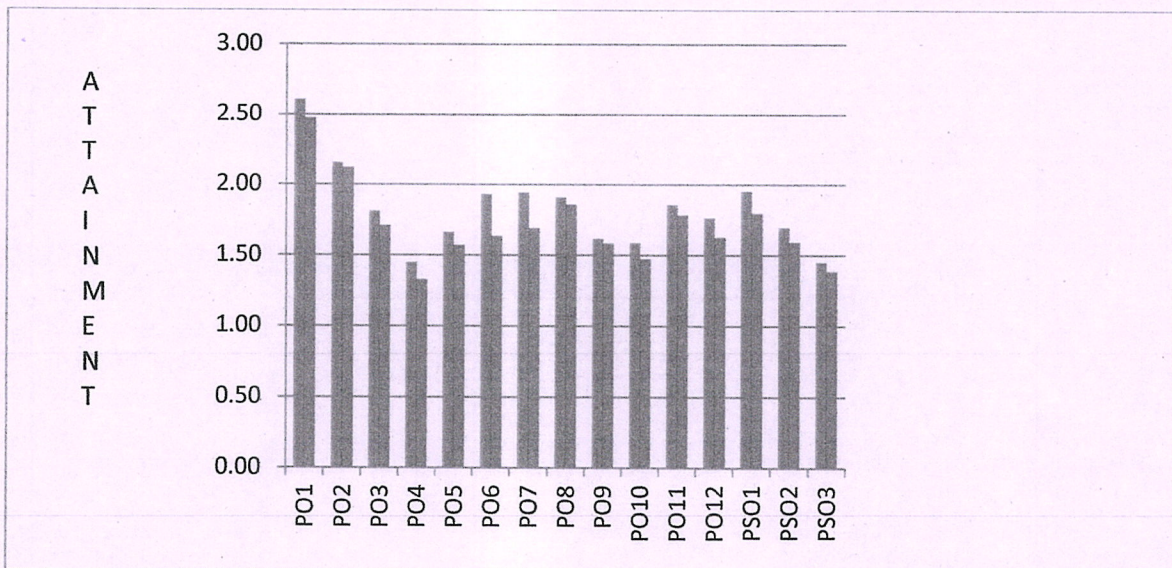

Dr. S. THILAGAVATHI M.E., Ph.D.,
 PRINCIPAL
SRI BHARATHI ENGINEERING
COLLEGE FOR WOMEN
 Kaikkurchi - 622 303, Pudukkottai Dt.

PSO1	To analyze, design and develop computing solutions by applying foundational concepts of Computer Science and Engineering.	1.73	1.53	88.21%
PSO2	To apply software engineering principles and practices for developing quality software for scientific and business applications.	1.89	1.68	88.97%
PSO3	To adapt to emerging Information and Communication Technologies (ICT) to innovate ideas and solutions to existing/novel problems.	1.43	0.96	66.87%

DEPARTMENT OF COMPUTER SCIENCE AND ENGINEERING

ACADEMIC YEAR 2018-2019

CO-PO-PSO TARGET Vs ATTAINED



[Signature]
HOD/ CSE

HOD / CSE
SRI BHARATHI ENGINEERING
COLLEGE FOR WOMEN
KAIKKURICHI,
PUDUKKOTTAI - 622 303

[Signature]
PRINCIPAL

PRINCIPAL
SRI BHARATHI ENGINEERING
COLLEGE FOR WOMEN
KAIKKURICHI - 622 303,
PUDUKKOTTAI DISTRICT

[Signature]

Dr. S.THILAGAVATHI M.E., Ph.D.,
PRINCIPAL
SRI BHARATHI ENGINEERING
COLLEGE FOR WOMEN
Kaikkurchi - 622 303, Pudukkottai Dt.

SRI BHARATHI ENGINEERING COLLEGE FOR WOMEN, KAIKURUCHI, PUDUKKOTTAI

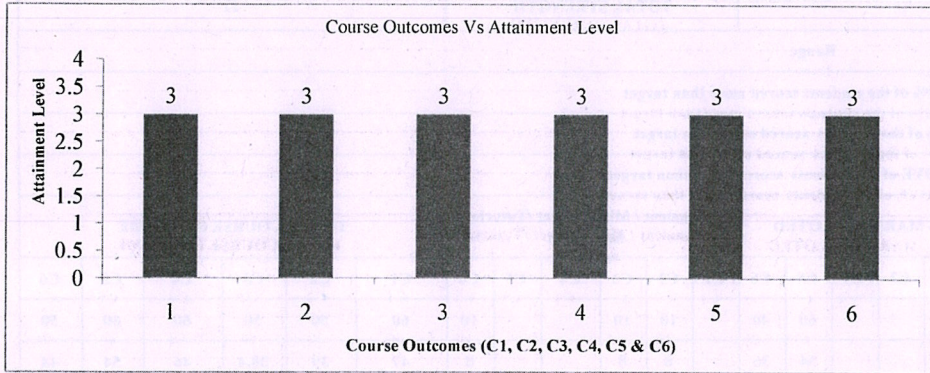
Department of Computer Science and Engineering

Internal Assessment - Attainment of Course Outcomes (Through Direct Assessment)

ACADEMIC YEAR - 2018 - 19		BATCH		2017 - 2021																												
COURSE CODE/TITLE		CS8392 (C204)/OBJECT ORIENTED PROGRAMMING		COURSE OUTCOME		1	2	3	4	5	6																					
YEAR/SEM		II/III		TARGET(%)		65	65	65	65	65	65																					
COURSE COORDINATOR		G.BHUVANESHWARI, AP/CSE		TOTAL STRENGTH		22																										
ATTAINMENT LEVEL		Level	Range																													
		1	UP TO 60% of the students scored more than target																													
		2	61 - 79% of the students scored more than target																													
		3	80% & ABOVE of the students scored more than target																													
S.NO	REG NO	NAME OF THE STUDENT	IAT 1 - MARKS ALLOTTED						IAT 2 - MARKS ALLOTTED						IAT 3 - MARKS ALLOTTED						Assignment / Mini Project / Tutorial / Seminar						TOTAL COURSE OUTCOME					
			C1	C2	C3	C4	C5	C6	C1	C2	C3	C4	C5	C6	C1	C2	C3	C4	C5	C6	C1	C2	C3	C4	C5	C6	C1	C2	C3	C4	C5	C6
			60	40							40	60						60	40		10	10			10	60	50	50	60	60	50	
1	912617104001	ADAIKKALAJAYASRI J	47	31						30	46						54	36		8	8			8	47	39	38.4	46	54	44		
2	912617104002	AKILA S	54	36						39	58						59	40		8	8			7	54	44	46.8	58	59.4	46.6		
3	912617104003	BAVANI V	57	38						40	60						59	40		9	9			8	57	47	49	60	59.4	47.6		
4	912617104004	DHANALAKSHMI S	47	32						31	47						53	35		7	9			8	47	39	40.2	47	52.8	43.2		
5	912617104005	INDUMATHI S	51	34						37	56						55	36		8	8			9	51	42	45.2	56	54.6	45.4		
6	912617104006	KARTHIKA S	44	29						30	44						54	36		8	7			9	44	37	36.6	44	54	45		
7	912617104007	KAYATHRI K	45	30						33	50						53	35		8	8			9	45	38	41.2	50	52.8	44.2		
8	912617104008	MULLAIYARASI R	56	37						39	58						61	40		9	8			9	56	46	46.8	58	60.6	49.4		
9	912617104009	NISHADEVI G	44	29						32	48						53	36		9	9			9	44	38	41	48	53.4	44.6		
10	912617104010	PARAMESHWARI S	46	30						40	59						54	36		8	9			8	46	38	48.6	59	54	44		
11	912617104011	PERIYANAYAGI M	46	31						29	44						53	36		8	8			8	46	39	37.2	44	53.4	43.6		
12	912617104012	PRIYADARSHINI S	47	32						31	47						53	36		8	9			8	47	40	40.2	47	53.4	43.6		
13	912617104013	PRIYADHARSHINI C	48	32						35	52						56	37		9	9			8	48	41	43.8	52	55.8	45.2		
14	912617104014	PRIYATHARSHINI V	51	34						36	53						56	38		9	9			8	51	43	44.6	53	56.4	45.6		
15	912617104015	RIZWANA PARVEEN Z	57	38						40	61						58	39		8	9			9	57	46	49.4	61	58.2	47.8		
16	912617104017	SEETHALAKSHMI S	43	28						30	44						53	35		8	9			9	43	36	38.6	44	52.8	44.2		


Dr. S. THILAGAVATHI M.E., Ph.D.,
 PRINCIPAL
 SRI BHARATHI ENGINEERING
 COLLEGE FOR WOMEN
 Kaikkurchi - 622 303, Pudukkottai Dt.

17	912617104018	VAHINI D	55	36												34	52												58	39		8	8					8	55	44	42.4	52	58.2	46.8
18	912617104019	VINOTHA P	51	34												36	53												58	38		8	8				7	51	42	43.6	53	57.6	45.4	
19	912617104301	JAYA PREETHA C	49	32												32	49												59	39		8	8				8	49	40	40.4	49	58.8	47.2	
20	912617104302	RAJĀ LAKSHMI R	47	31												33	49												55	36		7	7				8	47	38	39.8	49	54.6	44.4	
21	912617104303	SANGEETHA S	51	34												41	61												61	40		8	8				9	51	42	48.8	61	60.6	49.4	
22	912617104701	NAVINA N	46	31												35	53												59	40		9	9				9	46	40	44.2	53	59.4	48.6	



CO's Target Value	39.0	32.5	32.5	39.0	39.0	32.5
No. of Students scored above CO's Target Value	22	22	22	22	22	22
Percentage of Students scored above Target	100.0	100.0	100.0	100.0	100.0	100.0
CO Attainment	3	3	3	3	3	3
CO attainment Values to plot the Graph	3	3	3	3	3	3

G.P.F.
Faculty Incharge

[Signature]
Dr. S. THILAGAVATHI M.E., Ph.D.,
PRINCIPAL
SRI BHARATHI ENGINEERING
COLLEGE FOR WOMEN
Kaikkurchi - 622 303, Pudukkottai Dt.

[Signature]
HOD/CSE
HOD / CSE
SRI BHARATHI ENGINEERING
COLLEGE FOR WOMEN
KAIKKURICHI,
PUDUKKOTTAI - 622 303.

[Faint Stamp]
Dr. S. THILAGAVATHI M.E., Ph.D.,
PRINCIPAL
SRI BHARATHI ENGINEERING
COLLEGE FOR WOMEN
Kaikkurchi - 622 303, Pudukkottai Dt.

SRI BHARATHI ENGINEERING COLLEGE FOR WOMEN, KAIKURUCHI, PUDUKKOTTAI
DEPARTMENT OF CSE

COURSE OUTCOME ATTAINMENT - UNIVERSITY EXAMINATION
ACADEMIC YEAR : 2018 - 2019 (ODD SEM)

YEAR/SEM: II/III


Batch:2017-2021

SUBJECT :CS8392 (C204)/OBJECT ORIENTED PROGRAMMING


CO Attainment Level: 1 - (UPTO 60%) 2- (61%-79%) 3-(80% and Above)

TOTAL STRENGTH : 22

S.NO	Register No	NAME	Univ. Grade	
1	912617104001	ADAIKKALAJAYASRI J	B+	
2	912617104002	AKILA S	B+	
3	912617104003	BAVANI V	A+	
4	912617104004	DHANALAKSHMI S	B	
5	912617104005	INDUMATHI S	B+	
6	912617104006	KARTHIKA S	B	
7	912617104007	KAYATHRI K	B	
8	912617104008	MULLAIYARASI R	B+	
9	912617104009	NISHADEVI G	B+	
10	912617104010	PARAMESHWARI S	B+	
11	912617104011	PERIYANAYAGI M	B+	
12	912617104012	PRIYADARSHINI S	U	
13	912617104013	PRIYADHARSHINI C	B	
14	912617104014	PRIYATHARSHINI V	A+	
15	912617104015	RIZWANA PARVEEN Z	A+	
16	912617104017	SEETHALAKSHMI S	B	
17	912617104018	VAHINI D	B	
18	912617104019	VINOTHA P	B+	
19	912617104301	JAYA PREETHA C	B+	
20	912617104302	RAJA LAKSHMI R	B	
21	912617104303	SANGEETHA S	B+	
22	912617104701	NAVINA N	B	
No. of O Grade			0	0
No. of A+ Grade			3	3
No. of A Grade			0	0
No. of B+ Grade			10	10
No. of B Grade			8	8
No. of U Grade			1	1
No. of UA Grade			0	0
Target for course outcome Attainment			60	22
No of students above the target			21	
CO-Attainment University (%)			95.45	


Faculty


Dr. S. THILAGAVATHI M.E., Ph.D.,
PRINCIPAL
SRI BHARATHI ENGINEERING
COLLEGE FOR WOMEN
Kaikkuruchi - 622 303, Pudukkottai Dt.


HOD/ CSE
HOD / CSE
SRI BHARATHI ENGINEERING
COLLEGE FOR WOMEN
KAIKKURUCHI,
PUDUKKOTTAI - 622 303

Overall Attainment Sheet – COs - POs & PSOs attainment calculation

CO	CO-Attainment Internal (CO-INT) (Avg. Attainment of All section) (%)	CO-Attainment University (CO-UNI) (Avg. Attainment of All section) (%)	Direct CO Attainment (0.20xCO-INT + 0.80xCO-UNI) (%)	CO Attainment Level
C204.1	100.0	95.45	96.4	3
C204.2	100.0	95.45	96.4	3
C204.3	100.0	95.45	96.4	3
C204.4	100.0	95.45	96.4	3
C204.5	100.0	95.45	96.4	3
C204.6	100.0	95.45	96.4	3

Closure of the Quality Loop:

CO	CO-Target for Academic Year						CO Attainment Gap	Action Proposed to
	14-15		15-16		16-17			
C204.1	65	79.71	65	69	65	96.4	-	-
C204.2	65	79.71	65	71.17	65	96.4	-	-
C204.3	65	79.71	65	63.15	65	96.4	-	-
C204.4	65	79.71	65	75.11	65	96.4	-	-
C204.5	65	79.71	65	73.57	65	96.4	-	-
C204.6	65	79.71	65	68.44	65	96.4	-	-

Expected CO-PO Level

Course	PO1	PO2	PO3	PO4	PO5	PO6	PO7	PO8	PO9	PO10	PO11	PO12	PSO1	PSO2	PSO3
C204.1	2	2	2	2	1	-	-	-	-	-	-	-	2	2	1
C204.2	2	2	2	2	1	-	-	-	-	-	-	-	2	2	1
C204.3	2	2	2	2	1	-	-	-	-	-	-	-	2	2	2
C204.4	3	2	2	2	2	-	-	-	-	-	-	-	2	2	2
C204.5	3	2	2	2	2	-	-	-	-	-	-	-	2	2	2
C204.6	2	2	2	2	2	-	-	-	-	-	-	-	1	1	1
C204	2.3	2	2	2	2.5	-	-	-	-	-	-	-	1.8	1.8	1.5

PO Attainment Level

Course	PO1	PO2	PO3	PO4	PO5	PO6	PO7	PO8	PO9	PO10	PO11	PO12	PSO1	PSO2	PSO3
C204.1	2	2	2	2	1	-	-	-	-	-	-	-	2	2	1
C204.2	2	2	2	2	1	-	-	-	-	-	-	-	2	2	1
C204.3	2	2	2	2	1	-	-	-	-	-	-	-	2	2	2
C204.4	3	2	2	2	2	-	-	-	-	-	-	-	2	2	2
C204.5	3	2	2	2	2	-	-	-	-	-	-	-	2	2	2
C204.6	2	2	2	2	2	-	-	-	-	-	-	-	1	1	1
C204	2.33	2	2	2	1.5	-	-	-	-	-	-	-	1.83	1.83	1.5

Attainment of POs and PSOs:

Course Code	PO1	PO2	PO3	PO4	PO5	PO6	PO7	PO8	PO9	PO10	PO11	PO12	PSO1	PSO2	PSO3
C204	2.3	2	2	2	2.5	-	-	-	-	-	-	-	1.8	1.8	1.5
Attainment	2.33	2	2	2	1.5	-	-	-	-	-	-	-	1.83	1.83	1.5

Comments by Program Coordinator	1. 2.
Remarks by HoD	

Name and Signature of the Faculty Member

Dr. Bhuvaneshwari

[Signature]
Dr. S. THILAGAVATHI M.E., Ph.D.,
 PRINCIPAL
 SRI BHARATHI ENGINEERING
 COLLEGE FOR WOMEN
 Kaikkurichi - 622 303, Pudukkottai Dt.

[Signature]
 HOD/CSE
 SRI BHARATHI ENGINEERING
 COLLEGE FOR WOMEN
 KAIKKURICHI,



SRI BHARATHI ENGINEERING COLLEGE FOR WOMEN

(Approved by AICTE, New Delhi and Affiliated to Anna University, Chennai)

KAIKKURICHI, PUDUKKOTTAI – 622 303

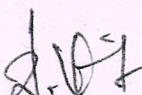
DEPARTMENT OF COMPUTER SCIENCE AND ENGINEERING

ACTION TAKEN REPORT FOR CO- PO-PSO ATTAINMENT

ACADEMIC YEAR 2018-2019

In order to bridge the gap between the attained level with respect to target level in each POs and PSOs, the following corrective measures were taken.

S.NO	Name of the activity Proposed	Focussed POs and PSOs
1	Value Added Course(VAC)- Web Designing And Development	PO1,PO2,PO3,PO4,PO5,PO10,PO9,PO12 PSO1,PSO2,PSO3
2	Entrepreneurship Development Cell (EDC) – Women in Data science: Leveraging Big Data for Entrepreneurial Success	PO6,PO7,PO8,PO11
3	Intellectual Property Rights (IPR) – IPR Strategies for Research and Development	PO6,PO7,PO8,PO11
4	Language and Communication Technology(LCT) - Communication Training	PO9,PO10
5	Soft Skill Program- Enhancing soft skills for success and Professional excellence	PO10
6	Life Skill Program- Physical and Mental Health	PO8
7	Information Communication Technology(ICT) tools – Collaborative Tools for Online Teaching and Learning	PO5, PO12
8	Research Methodology(RM)-IOT- Let's exploit and explore: Research Aspects	PO1,PO2,PO3,PO4, PSO1,PSO2,PSO3


HOD/CSE
HOD / CSE

SRI BHARATHI ENGINEERING
COLLEGE FOR WOMEN
KAIKKURICHI,
PUDUKKOTTAI - 622 303


Dr. S. THILAGAVATHI M.E., Ph.D.,
PRINCIPAL
SRI BHARATHI ENGINEERING
COLLEGE FOR WOMEN
Kaikkurichi - 622 303, Pudukkottai Dt.


PRINCIPAL
PRINCIPAL

SRI BHARATHI ENGINEERING
COLLEGE FOR WOMEN
KAIKKURICHI - 622 303.