



# SRI BHARATHI

ENGINEERING COLLEGE FOR WOMEN

(Approved by AICTE, New Delhi and Affiliated to Anna University, Chennai)  
Kaikkurichi, Pudukkottai -622 303

[www.sbec.edu.in](http://www.sbec.edu.in)

## NAAC - AQAR DOCUMENTS



Quality Indicator Frame Work

### Criterion – 6

**Governance, Leadership and Management**

Submitted by

**IQAC**

**Internal Quality Assurance Cell**

**Sri Bharathi Engineering College for Women**



**SRI BHARATHI ENGINEERING COLLEGE FOR WOMEN**  
(Approved by AICTE, New Delhi, & Affiliated to Anna University Chennai)  
**KAIKKURICHI, PUDUKKOTTAI-622 303**



Criteria 6	Governance, Leadership and Management
------------	---------------------------------------

### 6.1 Institutional Vision and Leadership

#### 6.1.2 The effective leadership is visible in various institutional practices such as decentralization and participative management.

The supporting documents pertaining to this metric 6.1.2 exceeds 6 MB data, hence the supporting document was uploaded in the institution website. Please click the below link to download the supporting documents

### Decentralization and participative management

#### Table of Contents

S.No	Description	Page No.
1.	Organizational chart	3-5



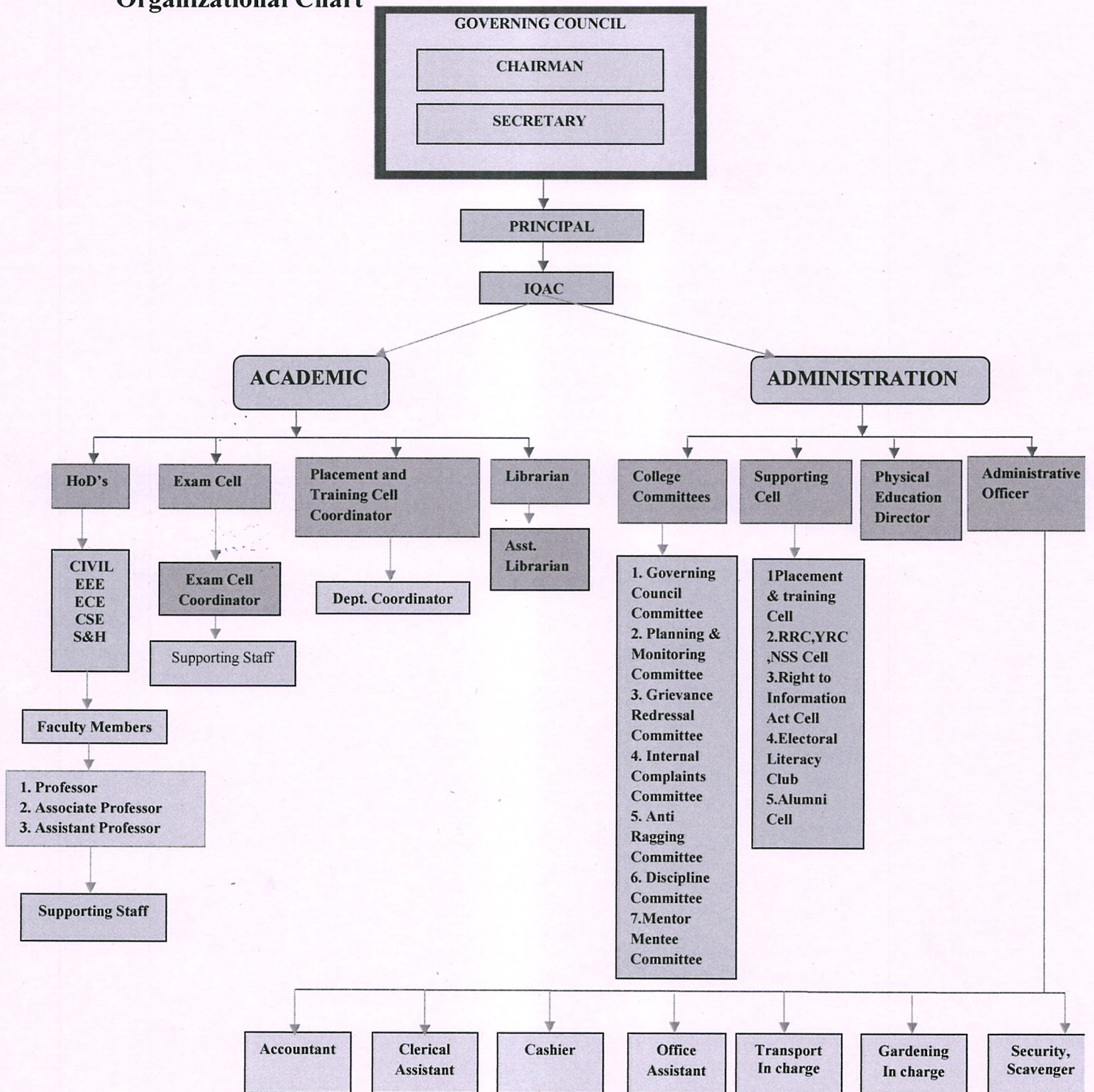


# SRI BHARATHI ENGINEERING COLLEGE FOR WOMEN

(Approved by AICTE, New Delhi & Affiliated to Anna University Chennai)

KAIKKURICHI, PUDUKKOTTAI-622 303

## Organizational Chart



Dr. S. THILAGAVATHI M.E., Ph.D.,  
PRINCIPAL  
SRI BHARATHI ENGINEERING  
COLLEGE FOR WOMEN  
Kakkurichi - 622 303, Pudukkottai Dt.





## SRI BHARATHI ENGINEERING COLLEGE FOR WOMEN

(Approved by AICTE, New Delhi & Affiliated to Anna University Chennai)

**KAIKKURICHI, PUDUKKOTTAI-622 303**

### **Vision:**

To accomplish the vision of Tamil Poet MAHAKAVI SUBRAMANIYA BHARATHIYAR, Sri Bharathi Engineering College for women obliged "To Empower Women as Intellectual, Valued Human, Ethical Engineer through Outcome Based Education to serve the society in the right path".

### **Mission:**

Our Institution Strive to attain the following Mission statements in order to achieve the Vision of Sri Bharathi Engineering College for women,

- To create conducive atmosphere for Active Teaching and Learning process by adopting Outcome Based Education to turnout an Intellectual Women Engineers.
- To impart value based Education to become Valued Human and professionally groom as Ethical Engineer in the field of Engineering and Allied Areas.
- To inculcate R&D activities in recent engineering and emerging areas to address the day to day issues faced by the society.
- To practice lifelong learning and empowering women students to serve the society as learned person.

### **Motto:**

SBECW main motto is to maintain quality in all sectors of our college like academics, placement, administration, infrastructure etc.

To ensure the efficiency of management and administration the college comprises:

- Management
- Principal
- Heads of Departments
- Faculty Members

  
Dr. S. THILAGAVATHI M.E., Ph.D.,

PRINCIPAL

SRI BHARATHI ENGINEERING  
COLLEGE FOR WOMEN

Kaikkurichi - 622 303, Pudukkottai Dt.



- Discipline Committee
- SC and ST Committee
- OBC Committee
- Mentor Mentee Committee
- Sports and Cultural Committee
- Placement and Training Cell
- Internal Quality Assurance Committee
- Hostel Mess Committee
- Examination Cell
- Scholarship Committee
- RRC/ YRC/ NSS
- Right to Information Act Cell
- Alumni Cell
- Electoral Literacy Club
- Women Empowerment Cell
- Entrepreneurship Development Cell



Dr. S.THILAGAVATHI M.E.,Ph.D.,  
PRINCIPAL  
SRI BHARATHI ENGINEERING  
COLLEGE FOR WOMEN  
Kaikkurchi - 622 303, Pudukkottai Dt.