



# SRI BHARATHI

ENGINEERING COLLEGE FOR WOMEN

(Approved by AICTE, New Delhi and Affiliated to Anna University, Chennai)  
Kaikkurichi, Pudukkottai -622 303

[www.sbec.edu.in](http://www.sbec.edu.in)

## NAAC DOCUMENTS



Quality Indicator Frame Work

Criterion – 1

CURRICULAR ASPECTS

Submitted by

**IQAC**

**Internal Quality Assurance Cell**

Sri Bharathi Engineering College for Women





# SRI BHARATHI ENGINEERING COLLEGE FOR WOMEN

(Approved by AICTE, New Delhi and Affiliated to Anna University, Chennai)  
Pudukkottai - Aranthangi Road,  
**Kaikkurichi, Pudukkottai - 622 303.**

Date : .....

## TO WHOMSEVER IT MAY CONCERN

**1.4.1 Institution obtains feedback on the academic performance and ambience of the institution from various stakeholders, such as Students, Teachers, Employers, Alumni etc. and action taken report on the feedback is made available on institutional website.**

*Feedback processes of the institution may be classified as follows:*

- A. Feedback collected, analysed, action taken & communicated to the relevant bodies and feedback hosted on the institutional website*
- B. Feedback collected, analysed and action has been taken and communicated to the relevant bodies*
- C. Feedback collected and analysed*
- D. Feedback collected*
- E. Feedback not collected*

**Response:** *Option A. Feedback collected, analysed, action taken & communicated to the relevant bodies and feedback hosted on the institutional website.*

**PRINCIPAL**

**PRINCIPAL  
SRI BHARATHI ENGINEERING  
COLLEGE FOR WOMEN  
KAIKKURICHI - 622 303.  
PUDUKKOTTAI DISTRICT**





## **SRI BHARATHI ENGINEERING COLLEGE FOR WOMEN**

(Approved by AICTE, New Delhi & Affiliated to Anna University, Chennai)

**KAKKURICHI, PUDUKKOTTAI, 622303**

<b>Criterion 1</b>	<b>Curricular Aspects</b>	<b>100</b>
--------------------	---------------------------	------------

1.4.1 Institution obtains feedback on the academic performance and ambience of the institution from various stakeholders, such as Students, Teachers, Employers, Alumni etc. and action taken report on the feedback is made available on institutional website.

### **2021-2022**

<b>S.NO.</b>	<b>DETAILS</b>	<b>PAGE NO</b>
1.	FEEDBACK ANALYSIS REPORT (Student,Teacher,Alumni,Parent,Employer)	04-13
2.	ACTION TAKEN REPORT	14-15
3.	PROOF OF ACTION TAKEN REPORT	16-23





# SRI BHARATHI ENGINEERING COLLEGE FOR WOMEN

(Approved by AICTE, Affiliated to Anna University, Chennai, India)

Kaikkurichi, Pudukkottai – 622 303

## CONSOLIDATED REPORT - STUDENTS FEEDBACK ON ACADEMIC PERFORMANCE & AMBIENCE ACADEMIC YEAR 2021-2022

TOTAL ENTRY: 183

Q.NO	DESCRIPTION	AVERAGE	PERCENTAGE
<b>ACADEMIC PERFORMANCE (CURRICULUM)</b>			
1.	The syllabus of the courses that you have studied in relation to the course competencies expected.	3.69	92
2.	The course curriculum framed by university is relevant to the programme and year of study.	3.63	91
3.	The allocation of the hours and credit to the course.	3.72	93
4.	The electives offered in syllabus are in relation to the technological advancement.	3.47	87
5.	Size of syllabus in terms of the load on the student.	3.59	90
6.	The courses in terms of extra learning or self-learning considering the design of the courses.	3.48	87
7.	The evaluation scheme designed for each of the course.	3.54	88
8.	The Syllabus coverage as prescribed by University.	3.64	91
9.	The experiments in the lab courses are relation to the real time application.	3.58	90
10.	The co-curricular activities conducted to bridge the gap between Academic and Industrial needs.	3.44	86
<b>AMBIENCE (INFRASTRUCTURE)</b>			
11.	The alternative source of energy & energy conservation methods adopted by institution.	3.69	92
12.	The management of various types of degradable and non-degradable waste in the college campus.	3.37	84
13.	The technologies for water conservation facility and green campus facility available in the college campus.	3.46	87
14.	The desire friendly and barrier free environment provided by institution.	3.33	83
15.	The ICT facilities available in class room, computing facilities provided by the institution.	3.74	93
16.	The infrastructure facilities available to meet out curricular, co-curricular, extracurricular activities by the institution	3.77	94

  
Dr. S. THILAGAVATHI M.E., Ph.D.,

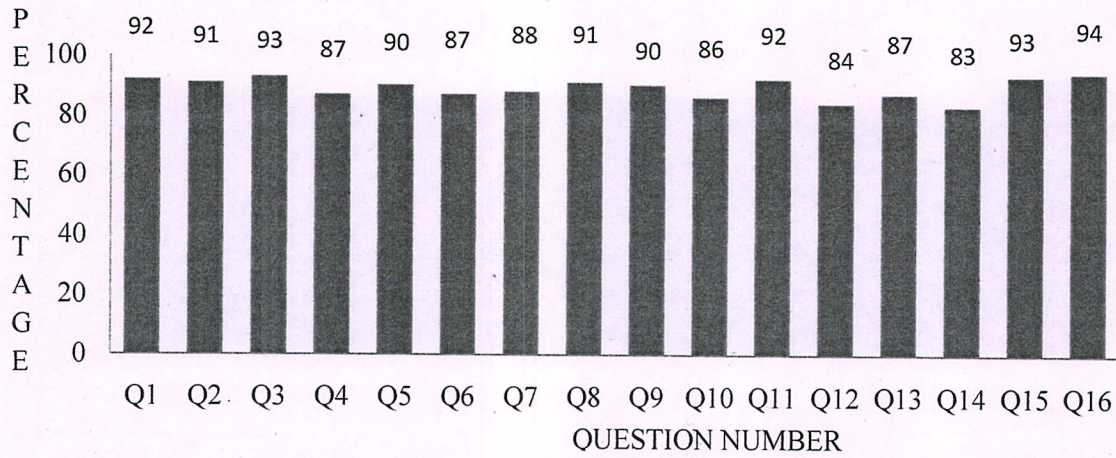
PRINCIPAL

SRI BHARATHI ENGINEERING  
COLLEGE FOR WOMEN

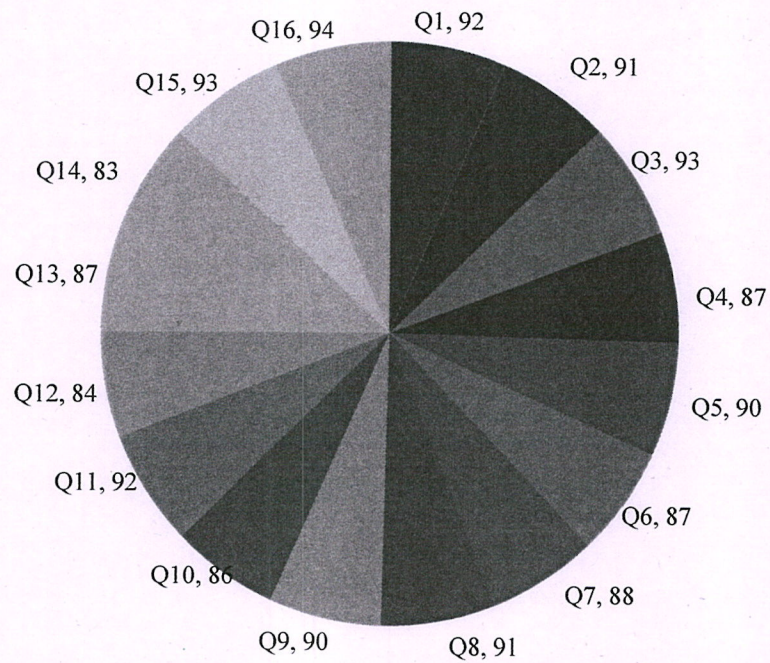
Kaikkurichi - 622 303, Pudukkottai Dt.



**STUDENTS FEEDBACK ON ACADEMIC PERFORMNACE & AMBIENCE  
ACADEMIC YEAR 2021-2022**



**STUDENTS FEEDBACK ON ACADEMIC PERFORMNACE & AMBIENCE  
ACADEMIC YEAR 2021-2022**



**Dr. S.THILAGAVATHI M.E., Ph.D.,**  
PRINCIPAL  
SRI BHARATHI ENGINEERING  
COLLEGE FOR WOMEN  
Kaikkurchi - 622 303, Pudukkottai Dt.

Principal





# SRI BHARATHI ENGINEERING COLLEGE FOR WOMEN


(Approved by AICTE, Affiliated to Anna University, Chennai, India)

Kaikkurichi, Pudukkottai – 622 303

## CONSOLIDATED REPORT-TEACHER FEEDBACK ON ACADEMIC PERFORMANCE & AMBIENCE ACADEMIC YEAR 2021-2022

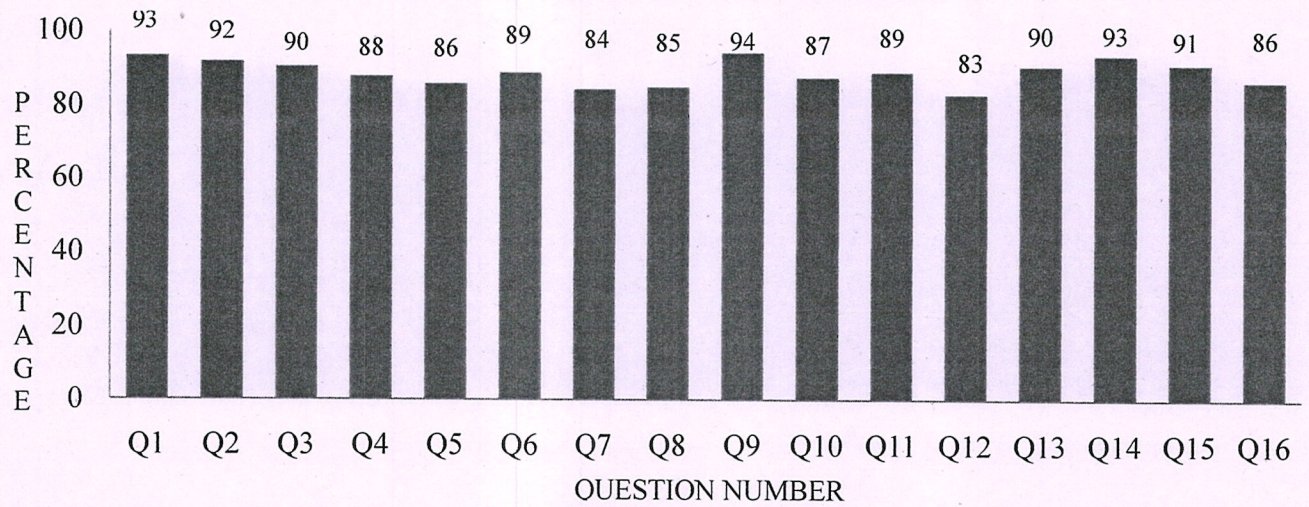
TOTAL ENTRY: 49

Q.NO	DESCRIPTION	AVERAGE	PERCENTAGE
<b>ACADEMIC PERFORMANCE (CURRICULUM)</b>			
1.	The syllabus of the courses that you have studied in relation to the course competencies expected.	3.73	93
2.	The course curriculum framed by university is relevant to the programme and year of study.	3.67	92
3.	The allocation of the hours and credit to the course.	3.61	90
4.	The electives offered in syllabus are in relation to the technological advancement.	3.51	88
5.	Size of syllabus in terms of the load on the student.	3.43	86
6.	The courses in terms of extra learning or self-learning considering the design of the courses.	3.55	89
7.	The evaluation scheme designed for each of the course.	3.37	84
8.	The Syllabus coverage as prescribed by University.	3.39	85
9.	The experiments in the lab courses are relation to the real time application.	3.76	94
10.	The co-curricular activities conducted to bridge the gap between Academic and Industrial needs.	3.49	87
<b>AMBIENCE (INFRASTRUCTURE)</b>			
11.	The alternative source of energy & energy conservation methods adopted by institution.	3.55	89
12.	The management of various types of degradable and non-degradable waste in the college campus.	3.31	83
13.	The technologies for water conservation facility and green campus facility available in the college campus.	3.61	90
14.	The desire friendly and barrier free environment provided by institution.	3.73	93
15.	The ICT facilities available in class room, computing facilities provided by the institution.	3.63	91
16.	The infrastructure facilities available to meet out curricular, co-curricular, extracurricular activities by the institution	3.45	86

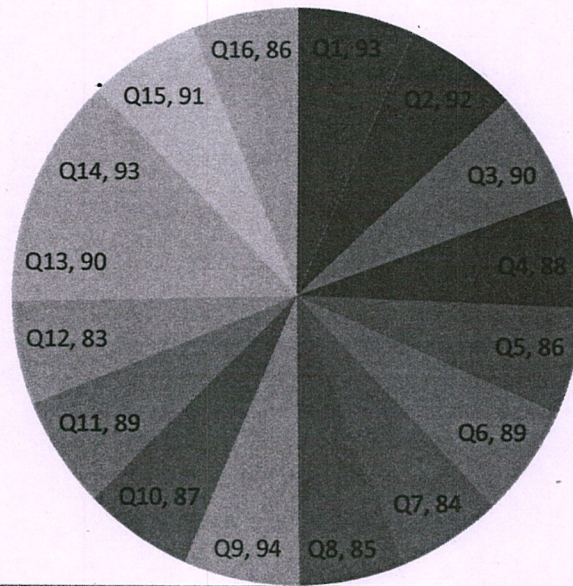
  
Dr. S. THILAGAVATHI M.E., Ph.D.,  
PRINCIPAL  
SRI BHARATHI ENGINEERING  
COLLEGE FOR WOMEN  
Kaikkurichi - 622 303, Pudukkottai Dt.



**TEACHER FEEDBACK ON ACADEMIC PERFORMANCE & AMBIENCE  
ACADEMIC YEAR 2021-2022**



**TEACHER FEEDBACK ON ACADEMIC PERFORMANCE &  
AMBIENCE  
ACADEMIC YEAR 2021-2022**



**Dr. S.THILAGAVATHI M.E., Ph.D.,  
PRINCIPAL  
SRI BHARATHI ENGINEERING  
COLLEGE FOR WOMEN  
Kaikkurchi - 622 303, Pudukkottai Dt.**

Principal





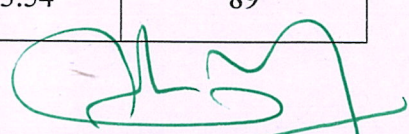
**SRI BHARATHI ENGINEERING COLLEGE FOR WOMEN**  
(Approved by AICTE, Affiliated to Anna University, Chennai, India)  
Kaikkurichi, Pudukkottai – 622 303  
**CONSOLIDATED REPORT-ALUMNI FEEDBACK ON ACADEMIC**

**PERFORMANCE & AMBIENCE**

**ACADEMIC YEAR 2021-2022**

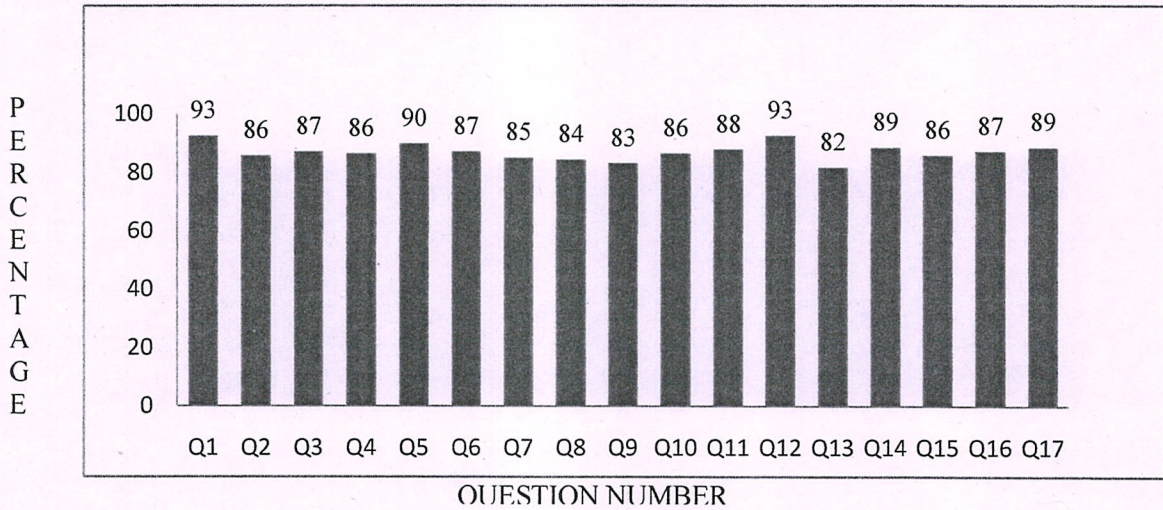
**TOTAL ENTRY: 37**

Q.NO	DESCRIPTION	AVERAGE	PERCENTAGE
<b>ACADEMIC PERFORMANCE (CURRICULUM)</b>			
1.	The syllabus of the courses that you have studied in relation to the course competencies expected.	3.70	93
2.	The course curriculum framed by university is relevant to the programme and year of study.	3.43	86
3.	The allocation of the hours and credit to the course.	3.49	87
4.	The electives offered in syllabus are in relation to the technological advancement.	3.46	86
5.	Size of syllabus in terms of the load on the student.	3.59	90
6.	The courses in terms of extra learning or self-learning considering the design of the courses.	3.49	87
7.	The evaluation scheme designed for each of the course.	3.41	85
8.	The Syllabus coverage as prescribed by University.	3.38	84
9.	The experiments in the lab courses are relation to the real time application.	3.32	83
10.	The co-curricular activities conducted to bridge the gap between Academic and Industrial needs.	3.46	86
11.	Training, Placement and Campus Recruitment offered by the Institution.	3.51	88
<b>AMBIENCE (INFRASTRUCTURE)</b>			
12.	The alternative source of energy & energy conservation methods adopted by institution.	3.70	93
13.	The management of various types of degradable and non-degradable waste in the college campus.	3.27	82
14.	The technologies for water conservation facility and green campus facility available in the college campus.	3.54	89
15.	The desire friendly and barrier free environment provided by institution.	3.43	86
16.	The ICT facilities available in class room, computing facilities provided by the institution.	3.49	87
17.	The infrastructure facilities available to meet out curricular,co-curricular,extracurricular activities by the institution	3.54	89

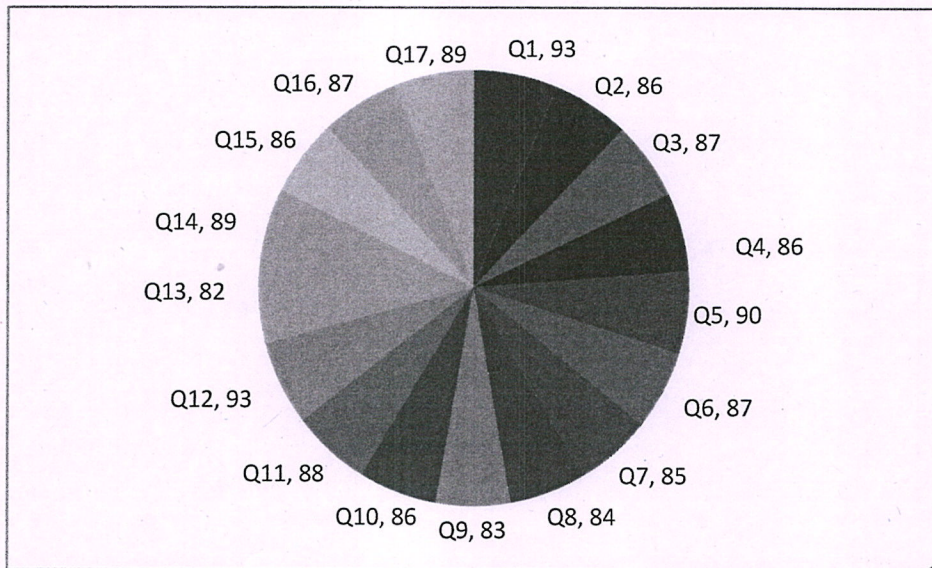
  
**Dr. S. THILAGAVATHI M.E., Ph.D.,**  
PRINCIPAL  
SRI BHARATHI ENGINEERING  
COLLEGE FOR WOMEN  
Kaikkurichi - 622 303, Pudukkottai Dt.

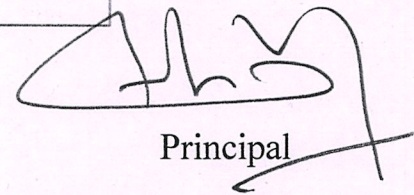


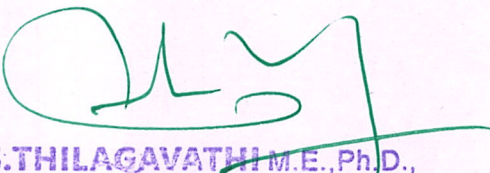
**ALUMNI FEEDBACK ON ACADEMIC PERFORMANCE & AMBIENCE  
ACADEMIC YEAR 2021-2022**



**ALUMNI FEEDBACK ON ACADEMIC PERFORMANCE & AMBIENCE  
ACADEMIC YEAR 2021-2022**



  
 Principal

  
**Dr. S.THILAGAVATHI M.E., Ph.D.,**  
 PRINCIPAL  
 SRI BHARATHI ENGINEERING  
 COLLEGE FOR WOMEN  
 Kaikkurchi - 622 303, Pudukkottai Dt.





# SRI BHARATHI ENGINEERING COLLEGE FOR WOMEN

(Approved by AICTE, Affiliated to Anna University, Chennai, India)

Kaikkurichi, Pudukkottai – 622 303

## CONSOLIDATED REPORT-PARENT FEEDBACK ON ACADEMIC PERFORMANCE & AMBIENCE ACADEMIC YEAR 2021-2022

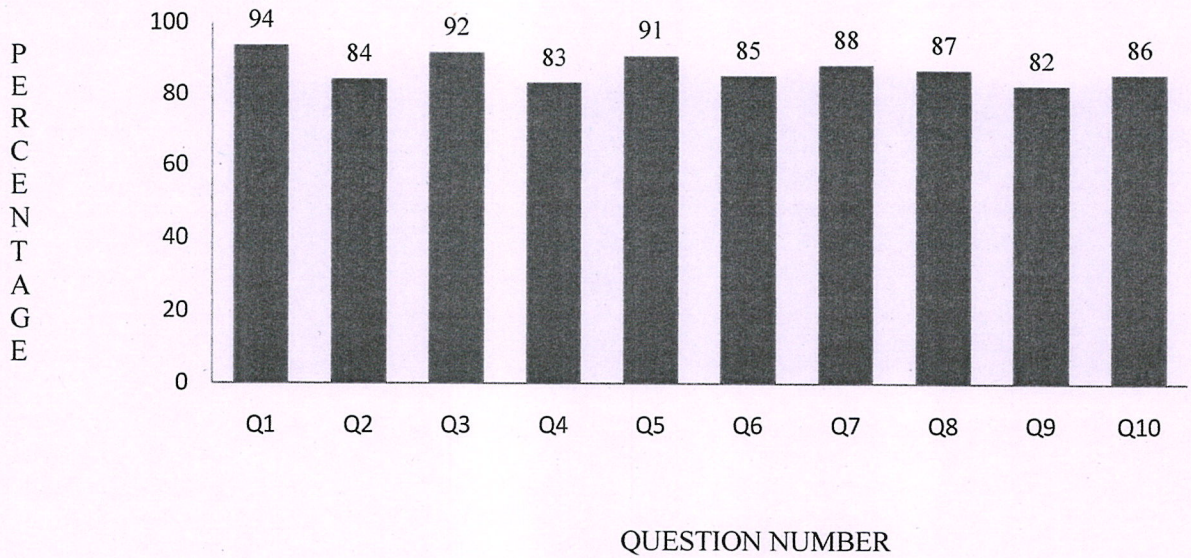
TOTAL ENTRY: 85

Q.NO	DESCRIPTION	AVERAGE	PERCENTAGE
<b>ACADEMIC PERFORMANCE (CURRICULUM)</b>			
1.	The electives offered in syllabus are in relation to the technological advancement.	3.75	94
2.	Size of syllabus in terms of the load on the student.	3.38	84
3.	The courses in terms of extra learning or self-learning considering the design of the courses.	3.67	92
4.	The evaluation scheme designed for each of the course.	3.33	83
<b>AMBIENCE (INFRASTRUCTURE)</b>			
5.	The alternative source of energy & energy conservation methods adopted by institution.	3.64	91
6.	The management of various types of degradable and non-degradable waste in the college campus.	3.41	85
7.	The technologies for water conservation facility and green campus facility available in the college campus.	3.53	88
8.	The desire friendly and barrier free environment provided by institution.	3.47	87
9.	The ICT facilities available in class room, computing facilities provided by the institution.	3.29	82
10.	The infrastructure facilities available to meet out curricular, co-curricular, extracurricular activities by the institution	3.42	86

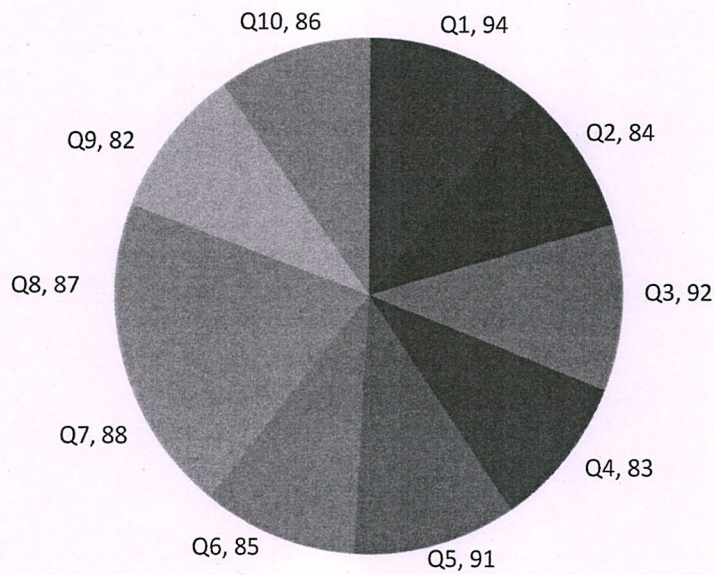
Dr. S. THILAGAVATHI M.E., Ph.D.,  
PRINCIPAL  
SRI BHARATHI ENGINEERING  
COLLEGE FOR WOMEN  
Kaikkurichi - 622 303, Pudukkottai Dt.



**PARENT FEEDBACK ON ACADEMIC PERFORMANCE & AMBIENCE  
ACADEMIC YEAR 2021-2022**



**PARENT FEEDBACK ON ACADEMIC PERFORMANCE & AMBIENCE  
ACADEMIC YEAR 2021-2022**



*(Signature)*  
**Dr. S. THILAGAVATHI M.E., Ph.D.**  
PRINCIPAL  
SRI BHARATHI ENGINEERING  
COLLEGE FOR WOMEN  
Kaikkurchi - 622 303, Pudukkottai Dt.

*(Signature)*  
Principal





# SRI BHARATHI ENGINEERING COLLEGE FOR WOMEN

(Approved by AICTE, Affiliated to Anna University, Chennai, India)

Kaikkurichi, Pudukkottai – 622 303

## CONSOLIDATED REPORT-EMPLOYER FEEDBACK ON ACADEMIC

### PERFORMANCE & AMBIENCE

ACADEMIC YEAR 2021-2022

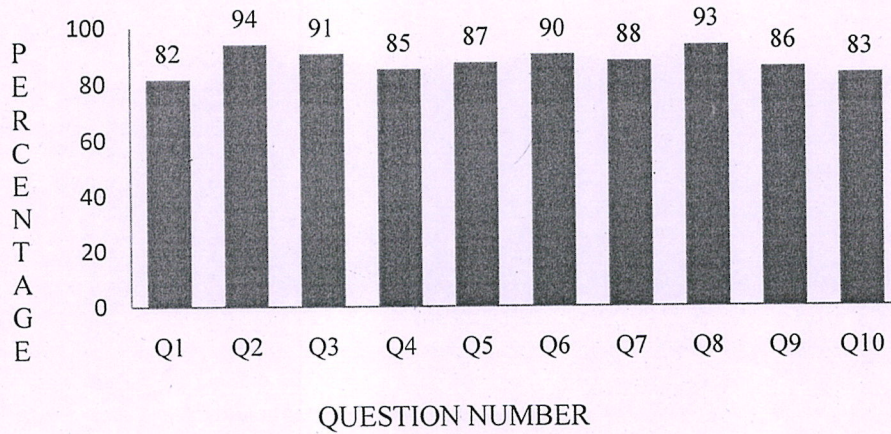
TOTAL ENTRY: 45

Q.NO	DESCRIPTION	AVERAGE	PERCENTAGE
<b>ACADEMIC PERFORMANCE (CURRICULUM)</b>			
1.	The syllabus of the courses that you have studied in relation to the course competencies expected.	3.27	82
2.	The course curriculum framed by university is relevant to the programme and year of study.	3.76	94
3.	The allocation of the hours and credit to the course.	3.62	91
4.	Training, Placement and Campus Recruitment offered by the Institution.	3.40	85
<b>AMBIENCE (INFRASTRUCTURE)</b>			
5.	The alternative source of energy & energy conservation methods adopted by institution.	3.49	87
6.	The management of various types of degradable and non-degradable waste in the college campus.	3.60	90
7.	The technologies for water conservation facility and green campus facility available in the college campus.	3.51	88
8.	The desire friendly and barrier free environment provided by institution.	3.73	93
9.	The ICT facilities available in class room, computing facilities provided by the institution.	3.42	86
10.	The infrastructure facilities available to meet out curricular,co-curricular,extracurricular activities by the institution	3.33	83

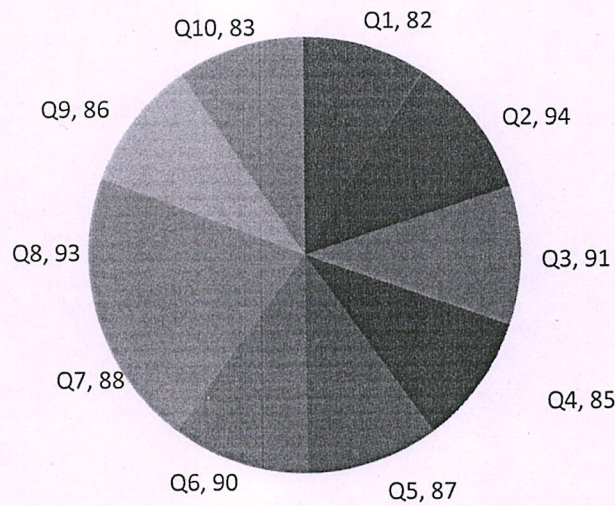
  
**Dr. S. THILAGAVATHI M.E., Ph.D.**  
PRINCIPAL  
SRI BHARATHI ENGINEERING  
COLLEGE FOR WOMEN  
Kaikkurichi - 622 303, Pudukkottai Dt.

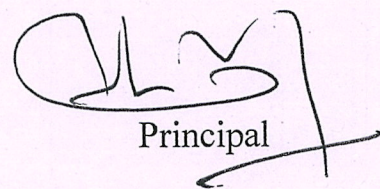


**EMPLOYER FEEDBACK ON ACADEMIC PERFORMANCE & AMBIENCE  
ACADEMIC YEAR 2021-2022**



**EMPLOYER FEEDBACK ON ACADEMIC PERFORMANCE & AMBIENCE  
ACADEMIC YEAR 2021-2022**



  
Principal

  
**Dr. S.THILAGAVATHI M.E., Ph.D.,**  
PRINCIPAL  
SRINIVAS ENGINEERING  
COLLEGE FOR WOMEN  
1, ... 22 303, Pudukkottai Dt.





# SRI BHARATHI ENGINEERING COLLEGE FOR WOMEN

(Approved by AICTE, New Delhi & Affiliated to Anna University, Chennai)

**KAIKKURICHI, PUDUKKOTTAI, 622303**

Date: 26/04/2022

## STAKEHOLDER FEEDBACK ON ACADEMIC PERFORMANCE & AMBIENCE ACTION TAKEN REPORT-2021-2022

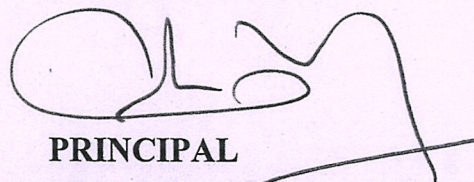
In order to improve the quality initiative, our Institution IQAC collected the feedback about R-2017 curriculum and the syllabus followed in our Institution from the various stake holders (Students, Faculty members, Alumni, Employer, Parents) offered by Anna University Chennai.

As a result, the collected feedback about the curriculum and syllabus were analyzed and based on the suggestion/representation received from the stakeholder in every department for bridging the curricular gap the following topics were suggested to include in Existing Anna University R-2017 Curriculum and Syllabus with recent trends for the benefit of the students community.

S.No	Name of the Degree	Course Code	Name of The Course	Topic to be included	Unit No
1.	B.E-Civil Engineering	CE8404	Concrete technology	Development and Application of Special Concrete	5
2.	B.E-Computer Science and Engineering	CS8501	Theory of Computation	R Language Basics	2
3.	B.E-Electronics and Communication	EC8093	Digital Image Processing	Fundamental of MATLAB and its uses	4
4.	B.E-Electrical and Electronics Engineering	ME8792	Power Plant Engineering	Electrical Safety	3

In this regard we kindly request you to discuss the above recommendations in the forthcoming Board of Studies (BoS) meeting and do the needful for the betterment of students Community

  
**Dr. S. THILAGAVATHI M.E., Ph.D.,**  
PRINCIPAL  
SRI BHARATHI ENGINEERING  
COLLEGE FOR WOMEN  
Kaikkurichi - 622 303, Pudukkotta: DL

  
PRINCIPAL  
PRINCIPAL  
SRI BHARATHI ENGINEERING  
COLLEGE FOR WOMEN  
KAIKKURICHI - 622 303.  
PUDUKKOTTAI DISTRICT





## SRI BHARATHI ENGINEERING COLLEGE FOR WOMEN

(Approved by AICTE, New Delhi & Affiliated to Anna University, Chennai)

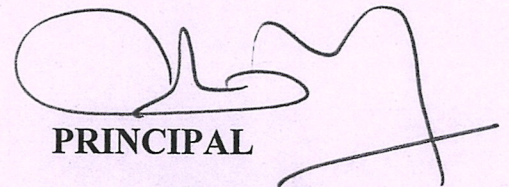
**KAIKKURICHI, PUDUKKOTTAI, 622303**

In this regard we sent a letter to Anna University and Requested to discuss the above recommendations in the forthcoming Board of Studies (BoS) meeting for the betterment of students community

In addition to that, the following Value added courses were offered by all Departments of SBECW in the academic year 2021-2022 to enhance the curricular content with recent trend for the benefit of the student community with the approval from various Department .


### List of Value added courses conducted to bridge the curricular gap

S.No	VAC Course Name	Department
1.	Remote sensing and GIS in Civil Engineering	CIVIL
2.	Development and application special concrete	
3.	Machine Learning With Python	CSE
4.	R Language Basics	
5.	Fundamental of MATLAB and its uses.	ECE
6.	Different Methodologies for IC Design	
7.	Energy auditing in domestic application	EEE
8.	Electrical safety	



**PRINCIPAL**

PRINCIPAL  
SRI BHARATHI ENGINEERING  
COLLEGE FOR WOMEN  
KAIKKURICHI - 622 303.  
PUDUKKOTTAI DISTRICT



**Dr. S. THILAGAVATHI M.E., Ph.D.,**  
PRINCIPAL  
SRI BHARATHI ENGINEERING  
COLLEGE FOR WOMEN  
Kaikkurchi - 622 303, Pudukkottai Dt.



# SRI BHARATHI ENGINEERING COLLEGE FOR WOMEN

(Approved by AICTE, New Delhi, Affiliated to Anna University, Chennai-25)

Kaikkurichi, Pudukkottai, Tamil Nadu – 622 303, India

## Report on Value Added Course

Title: Fundamentals of MATLAB and its Uses

Resource Person: **Er.C.MURUGAN,**  
Senior Project Engineer,  
Marcello Tech,  
Trichy- 620 002.

Date of conduct from : **9.8.2021** To: **13.8.2021** Duration: **30 Hours**

Organized Department : **Electronics and Communication Engineering**

Participant Year: **2/ 3 /4** Semester: **ODD** No. of Students Registered : **32**

Venue: **Seminar Hall, ,Ground Floor, SBECW**

### **Outcome of Value Added Course (VAC) :At the end of Course ,Students can able to**

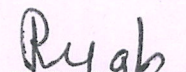
- Learn features of MATLAB as a programming tool. They are fully familiar to all the features of MATLAB software and easily handle the software.
- Develop programming skills and technique to solve mathematical problems.
- Learn graphic features of MATLAB and they are able to use this feature effectively in the various applications.
- Use MATLAB as a simulation tool.
- Work as a 'MATLAB programmer' in the industry.
- Will helps students to get the jobs in future.

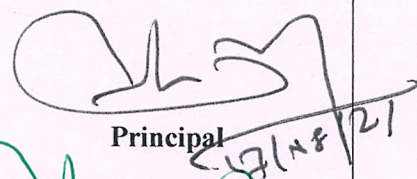
No. of students successfully completed the VAC course is **32 Students** based on the following Assessment process.

### **Assessment Process**

- Students securing **more than 60% on total score** and secured more than **75%** in attendance is eligible to receive the certificate for the VAC course conducted
- Total Score = (0.5 \*Attendance in VAC out of 100 percentage + 0.5 \*Test mark in VAC out of 100 marks)

  
VAC Coordinator

  
HoD/ ECE  
HOD / ECE

  
Principal

SRI BHARATHI ENGINEERING  
COLLEGE FOR WOMEN  
KAIKKURICHI,  
PUDUKKOTTAI - 622 303.

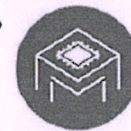
  
**Dr. S.THILAGAVATHI M.E., Ph.D.**  
PRINCIPAL  
SRI BHARATHI ENGINEERING  
COLLEGE FOR WOMEN  
Kaikkurichi - 622 303, Pudukkottai, Dt.





**SRI BHARATHI ENGINEERING COLLEGE FOR WOMEN**

**Kaikkurichi, Pudukottai - 622 303.**



**MARCELLO TECH**



**CERTIFICATE**

**OF COMPLETION**

This is certify that Mr./Ms./Mrs. **ANUSHYA M, II Yr / ECE** of

**SRI BHARATHI ENGINEERING COLLEGE FOR WOMEN**

has successfully completed Five Days Value Added Course on "**Fundamentals of MATLAB and its Uses**" organized by the **Department of Electronics and Communication Engineering**, Sri Bharathi Engineering College for Women, Pudukottai in association with Marcellotech from **09.08.2021 to 13.08.2021**

*S. Arudaiti*

**MANAGER**



*Dr. S. Thilagavathi*

**Dr. S. THILAGAVATHI M.E., Ph.D.,  
PRINCIPAL**

**SRI BHARATHI ENGINEERING  
COLLEGE FOR WOMEN  
Kaikkurichi - 622 000, Pudukottai Dt.**

*R. Ugh*

**HOD - ECE**



# SRI BHARATHI ENGINEERING COLLEGE FOR WOMEN

(Approved by AICTE, New Delhi, Affiliated to Anna University, Chennai-25)

KAIKKURICHI, PUDUKKOTTAI, TAMIL NADU – 622 303, INDIA

## Report on Value Added Course

Title: ENERGY AUDITING ON DOMESTIC APPLICATION

Resource Person: Mr.N.Sasikumar, Technical Head,  
SD Pro Solutions, No. 64, 1st floor, Sri Krishna complex,  
Opp to E.R Higher Sec School,Chinthamani,Trichy-2.  
Mail id: [sdprotrichy@gmail.com](mailto:sdprotrichy@gmail.com)

Date of conduct from : 09.08.2021 To: 14.08.2021 Duration: 36 Hours

Organized Department : ELECTRICAL AND ELECTRONICS ENGINEERING

Participant Year: 2/ 3 /4 Semester: ODD No. of Students Registered : 27

Venue: Tutorial Hall:42, SBECW.

### Outcome of Value Added Course (VAC)

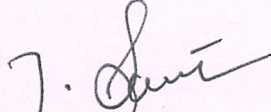
At the end of the Course, Students can able to

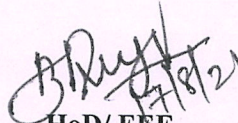
- Explain about the energy needs of growing economy, energy security.
- Describe about the Audit Methodology, Financial Analysis, Sensitivity Analysis, Energy Monitoring and Training and Survey Instrumentation.
- Obtain the insight about HVAC, Psychrometry, Vapour – Compression Refrigeration Cycle, impact of refrigerants on environment, energy saving in HVAC.
- Comprehend about the Energy management (audit) approach, maximizing system efficiencies.
- Demonstrate about optimizing the input energy requirements, Fuel and energy substitution.
- Illustrate about the energy saving measures in new buildings, energy conservation planning, and Energy conservation in household and commercial sectors.

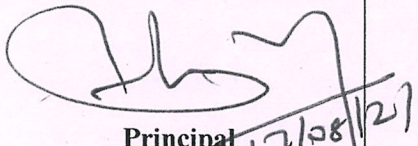
No. of students successfully completed the VAC course is 27 students based on the following assessment process.

### Assessment Process

Students, who are securing **more than 60% on total score** and secured more than **75%** in attendance is eligible to receive the certificate for the VAC course conducted. Total Score = (0.5 \* Attendance in VAC out of 100 percentage + 0.5 \* Test mark in VAC out of 100 marks)

  
VAC Coordinator

  
HoD/ EEE

  
Principal 17/08/21

**HOD EEE**  
SRI BHARATHI ENGINEERING  
COLLEGE FOR WOMEN  
KAIKKURICHI,  
PUDUKKOTTAI - 622 303.

**PRINCIPAL**  
SRI BHARATHI ENGINEERING  
COLLEGE FOR WOMEN  
KAIKKURICHI - 622 303.  
PUDUKKOTTAI DISTRICT

  
Dr. S.THILAGAVATHI M.E., Ph.D.,  
PRINCIPAL  
SRI BHARATHI ENGINEERING  
COLLEGE FOR WOMEN  
Kaikkurichi - 622 303, Pudukkottai Dt.



## SD PRO SOLUTIONS

No. 64, 1st floor, Sri Krishna complex,  
Opp to E.R Higher Sec School, Chinthamani, Trichy-2.  
Mail id: [sdprotrichy@gmail.com](mailto:sdprotrichy@gmail.com)



# CERTIFICATE OF PARTICIPATION

This is to certify that Ms. AASHIKA R, Reg no: 912619105001, III year, EEE department has successfully completed the Value added Course on "ENERGY AUDITING IN DOMESTIC APPLICATIONS" conducted at **Sri Bharathi Engineering College for Women, Pudukkottai** in association with **SD PRO SOLUTIONS PVT LTD, Trichy** from 09.08.2021 to 14.08.2021.

MR.N.SASIKUMAR  
TECHNICAL HEAD

PRINCIPAL  
SBECW

Dr. S. THILAGAVATHI M.E., Ph.D.,  
PRINCIPAL  
SRI BHARATHI ENGINEERING  
COLLEGE FOR WOMEN  
Kaikkurchi - 622 303, Pudukkottai Dt.





# SRI BHARATHI ENGINEERING COLLEGE FOR WOMEN

(Approved by AICTE, New Delhi, Affiliated to Anna University, Chennai-25)

Kaikkurichi, Pudukkottai, Tamil Nadu – 622 303, India

## Report on Value Added Course

Title:	Machine Learning with Python				
Resource Person:	<b>Resource Person 1 :</b> Mr. K.Marimuthu Master Trainer Rooboo Tech		<b>Resource Person 2 :</b> Ms.D.Janani Master Trainer Rooboo Tech		
Date of conduct from :	09.08.2021	To:	13.08.2021	Duration:	30 Hours
Organized Department :	COMPUTER SCIENCE AND ENGINEERING				
Participant Year:	2,3,4(CSE)	Semester:	ODD	No. of Students Registered :	71
Venue:	Auditorium				

### Outcome of Value Added Course (VAC)

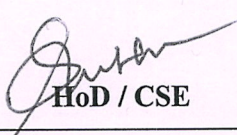
At the end of the VAC course the student can able to

- Describe the various types of Machine Learning algorithms and when to use them.
- Compare and contrast linear classification methods including multiclass prediction, support vector machines, and logistic regression.
- Write Python code that implements various classification techniques including K-Nearest neighbors (KNN), decision trees, and regression trees.
- Evaluate the results from simple linear, non-linear, and multiple regression on a data set using evaluation metric.

### Assessment Process

- Students securing **more than 60% on total score** and secured more than 75% in attendance is eligible to receive the certificate for the VAC course conducted
- Total Score =  $(0.5 * \text{Attendance in VAC out of 100 percentage} + 0.5 * \text{Test mark in VAC out of 100 marks})$

  
VAC Coordinator

  
HoD / CSE

  
Principal

  
Dr. S.THILAGAVATHI M.E., Ph.D.,

PRINCIPAL

SRI BHARATHI ENGINEERING  
COLLEGE FOR WOMEN

Kaikkurichi - 622 303, Pudukkottai Dt.

PRINCIPAL  
SRI BHARATHI ENGINEERING  
COLLEGE FOR WOMEN  
KAIKKURCHI - 622 303  
PUDUKKOTTAI DISTRICT





**ROOBOO TECH**  
SOFTWARE TRAINING INSTITUTE



**ROOBOO**  
Design. Develop. Deliver

# Certificate of Completion

*This is to certify that Ms. J. RASMI is studying 999 CSE at Sri Bharathi Engineering College for Women has successfully completed her value added course titled **Machine Learning with Python** during the period from 09.08.2021 to 13.08.2021.*

Managing Director  
ROOBOO

Dr. S. THILAGAVATHI M.E., Ph.D.,  
PRINCIPAL  
SRI BHARATHI ENGINEERING  
COLLEGE FOR WOMEN  
Kaikkurichi - 622 303, Pudukkottai Dt.

Principal  
SBECW





**SRI BHARATHI ENGINEERING COLLEGE FOR WOMEN**  
(Approved by AICTE, New Delhi, Affiliated to Anna University, Chennai-25)  
Kaikkurichi, Pudukkottai, Tamil Nadu – 622 303, India

**Report on Certificate Course**

Title:	Remote Sensing and GIS in Civil Engineering				
Resource Person:	Mrs. P. Dennis Flora, Assistant Professor, Department of Civil Engineering.		Ms.G.Gayathri, Assistant Professor, Department of Civil Engineering.		
Date of conduct from :	07.03.2022	To:	11.03.2022	Duration:	30 Hours
Organized Department :	CIVIL ENGINEERING				
Participant Year:	2, 3, 4	Semester:	EVEN	No. of Students Registered :	20
Venue:	First Floor-Lecture Hall:30				

**Outcome of Certificate Course (CC): Students can able to**


- Explain about the Remote Sensing Data and Corrections
- Describe about the Satellite Image Corrections
- Illustrate the Digital Image Processing and its applications.
- Get knowledge about Imaging Spectroscopy , GIS and Application
- Explain the applications like updating information on road networks and other urban infrastructure, Collection and analysis of data on population density, distribution and growth, Preparation of housing typologies, Analysis of watersheds, Landscape development, 3D modeling, Infrastructure modeling and Environmental impact assessment


No. of students successfully completed the VAC course is **20 students** based on the following assessment process.

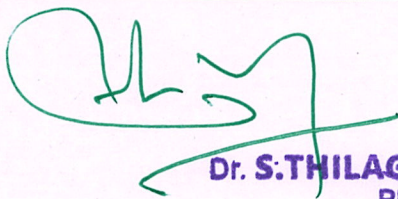
**Assessment Process**

- Students securing **more than 60% on total score** and secured more than 75% in attendance is eligible to receive the certificate for the VAC course conducted
- Total Score =  $(0.5 * \text{Attendance in VAC out of 100 percentage} + 0.5 * \text{Test mark in VAC out of 100 marks})$

  
VAC Coordinator

  
HOD/Civil  
HOD / CIVIL

  
Principal  
**PRINCIPAL**



**Dr. S.THILAGAVATHI M.E.,Ph.D.,**  
PRINCIPAL

**SRI BHARATHI ENGINEERING  
COLLEGE FOR WOMEN  
Kaikkurichi - 622 303, Pudukkottai Dt.**

SRI BHARATHI ENGINEERING  
COLLEGE FOR WOMEN  
KAIKKURICHI,  
PUDUKKOTTAI - 622 303

**SRI BHARATHI ENGINEERING  
COLLEGE FOR WOMEN  
KAIKKURICHI - 622 303  
PUDUKKOTTAI DISTRICT**



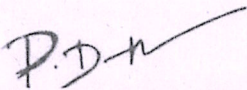


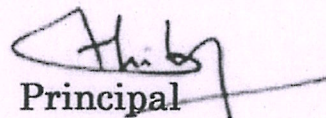
# SRI BHARATHI ENGINEERING COLLEGE FOR WOMEN

(Approved by AICTE, New Delhi, Affiliated to Anna University, Chennai-25)  
Kaikkurichi, Pudukkottai, Tamil Nadu – 622 303, India

## DEPARTMENT OF CIVIL ENGINEERING CERTIFICATE OF PARTICIPATION

This is Certify that Ms. SATHYA M, B.E - Civil Engineering, IV year has successfully completed the Certificate Course on “Remote Sensing and GIS in Civil Engineering” conducted from 7<sup>th</sup> March 2022 to 11<sup>th</sup> March 2022 (5 days) during the Academic year 2021-2022.

  
Course Coordinator

  
Principal

  
Dr. S.THILAGAVATHI M.E., Ph.D.,  
PRINCIPAL  
SRI BHARATHI ENGINEERING  
COLLEGE FOR WOMEN  
Kaikkurichi - 622 303, Pudukkottai Dt.