



SRI BHARATHI

ENGINEERING COLLEGE FOR WOMEN

(Approved by AICTE, New Delhi and Affiliated to Anna University, Chennai)
Kaikkurichi, Pudukkottai -622 303

www.sbec.edu.in

NAAC DOCUMENTS



Quality Indicator Frame Work

Criterion – 1

CURRICULAR ASPECTS

Submitted by

IQAC

Internal Quality Assurance Cell

Sri Bharathi Engineering College for Women



SRI BHARATHI ENGINEERING COLLEGE FOR WOMEN

(Approved by AICTE, New Delhi and Affiliated to Anna University, Chennai)
Pudukkottai - Aranthangi Road,
Kaikkurichi, Pudukkottai - 622 303.

Date :

TO WHOMSEVER IT MAY CONCERN

1.4.1 Institution obtains feedback on the academic performance and ambience of the institution from various stakeholders, such as Students, Teachers, Employers, Alumni etc. and action taken report on the feedback is made available on institutional website.

Feedback processes of the institution may be classified as follows:

- A. Feedback collected, analysed, action taken & communicated to the relevant bodies and feedback hosted on the institutional website*
- B. Feedback collected, analysed and action has been taken and communicated to the relevant bodies*
- C. Feedback collected and analysed*
- D. Feedback collected*
- E. Feedback not collected*

Response: *Option A. Feedback collected, analysed, action taken & communicated to the relevant bodies and feedback hosted on the institutional website.*

PRINCIPAL

**PRINCIPAL
SRI BHARATHI ENGINEERING
COLLEGE FOR WOMEN
KAIKKURICHI - 622 303.
PUDUKKOTTAI DISTRICT**



SRI BHARATHI ENGINEERING COLLEGE FOR WOMEN

(Approved by AICTE, New Delhi & Affiliated to Anna University, Chennai)

KAKKURICHI, PUDUKKOTTAI, 622303

Criterion 1	Curricular Aspects	100
--------------------	---------------------------	------------

1.4.1 Institution obtains feedback on the academic performance and ambience of the institution from various stakeholders, such as Students, Teachers, Employers, Alumni etc. and action taken report on the feedback is made available on institutional website.

2018-2019

S.NO.	DETAILS	PAGE NO
1.	FEEDBACK ANALYSIS REPORT (Student,Teacher,Alumni,Parent,Employer)	04-13
2.	ACTION TAKEN REPORT	14-15
3.	PROOF OF ACTION TAKEN REPORT	16-23



SRI BHARATHI ENGINEERING COLLEGE FOR WOMEN

(Approved by AICTE, Affiliated to Anna University, Chennai, India)

Kaikkurichi, Pudukkottai – 622 303

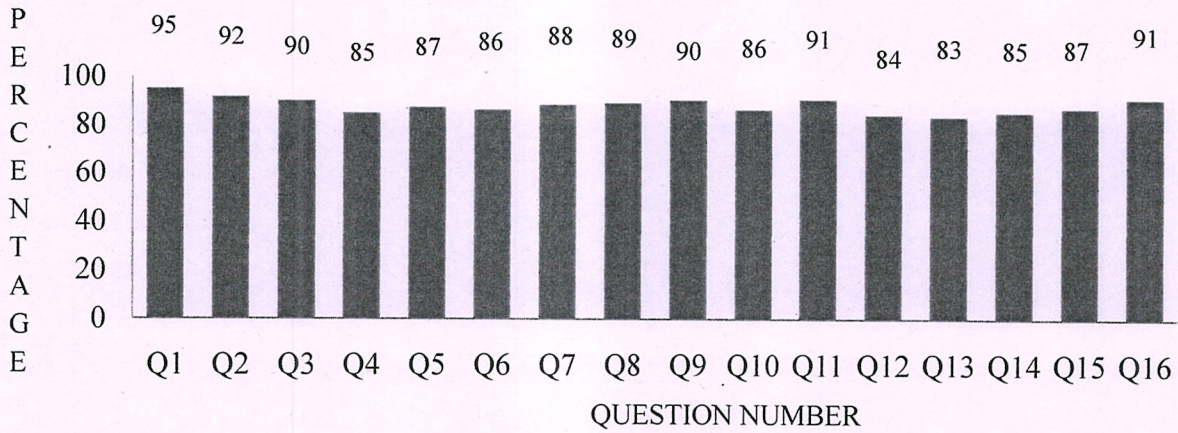
CONSOLIDATED REPORT - STUDENTS FEEDBACK ON ACADEMIC PERFORMANCE & AMBIENCE ACADEMIC YEAR 2018-2019

TOTAL ENTRY: 239

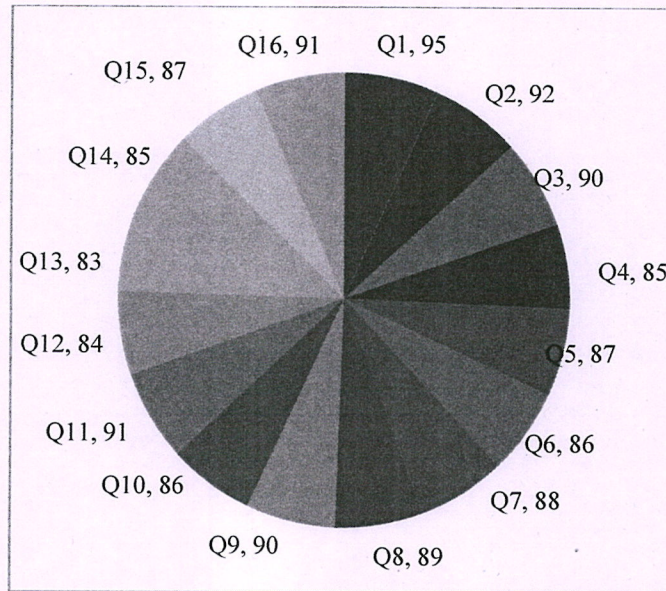
Q.NO	DESCRIPTION	AVERAGE	PERCENTAGE
ACADEMIC PERFORMANCE (CURRICULUM)			
1.	The syllabus of the courses that you have studied in relation to the course competencies expected.	3.8	95
2.	The course curriculum framed by university is relevant to the programme and year of study.	3.66	92
3.	The allocation of the hours and credit to the course.	3.6	90
4.	The electives offered in syllabus are in relation to the technological advancement.	3.39	85
5.	Size of syllabus in terms of the load on the student.	3.49	87
6.	The courses in terms of extra learning or self-learning considering the design of the courses.	3.45	86
7.	The evaluation scheme designed for each of the course.	3.53	88
8.	The Syllabus coverage as prescribed by University.	3.56	89
9.	The experiments in the lab courses are relation to the real time application.	3.61	90
10.	The co-curricular activities conducted to bridge the gap between Academic and Industrial needs.	3.45	86
AMBIENCE (INFRASTRUCTURE)			
11.	The alternative source of energy & energy conservation methods adopted by institution.	3.62	91
12.	The management of various types of degradable and non-degradable waste in the college campus.	3.36	84
13.	The technologies for water conservation facility and green campus facility available in the college campus.	3.33	83
14.	The desire friendly and barrier free environment provided by institution.	3.42	85
15.	The ICT facilities available in class room, computing facilities provided by the institution.	3.47	87
16.	The infrastructure facilities available to meet out curricular, co-curricular, extracurricular activities by the institution	3.63	91


Dr. S. THILAGAVATHI M.E., Ph.D.,
PRINCIPAL
SRI BHARATHI ENGINEERING
COLLEGE FOR WOMEN
Kaikkurichi - 622 303, Pudukkottai Dt.

**STUDENTS FEEDBACK ON ACADEMIC PERFORMNACE & AMBIENCE
ACADEMIC YEAR 2018-2019**



**STUDENTS FEEDBACK ON ACADEMIC PERFORMNACE & AMBIENCE
ACADEMIC YEAR 2018-2019**



**Dr. S. THILAGAVATHI M.E., Ph.D.,
PRINCIPAL
SRI BHARATHI ENGINEERING
COLLEGE FOR WOMEN
Kaikkurchi - 622 303, Pudukkottai Dt.**

Principal



SRI BHARATHI ENGINEERING COLLEGE FOR WOMEN

(Approved by AICTE, Affiliated to Anna University, Chennai, India)

Kaikkurichi, Pudukkottai – 622 303

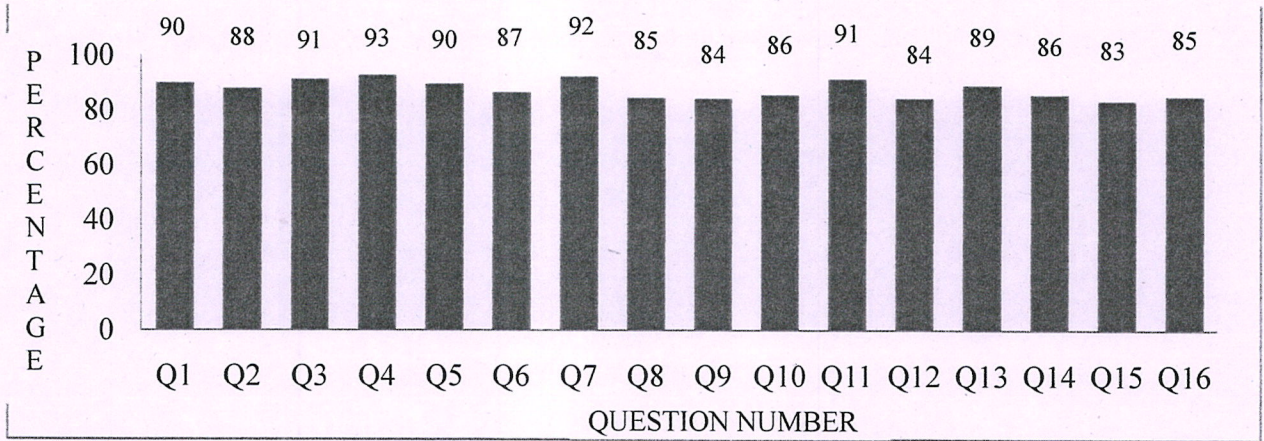
CONSOLIDATED REPORT-TEACHER FEEDBACK ON ACADEMIC PERFORMANCE & AMBIENCE ACADEMIC YEAR 2018-2019

TOTAL ENTRY: 52

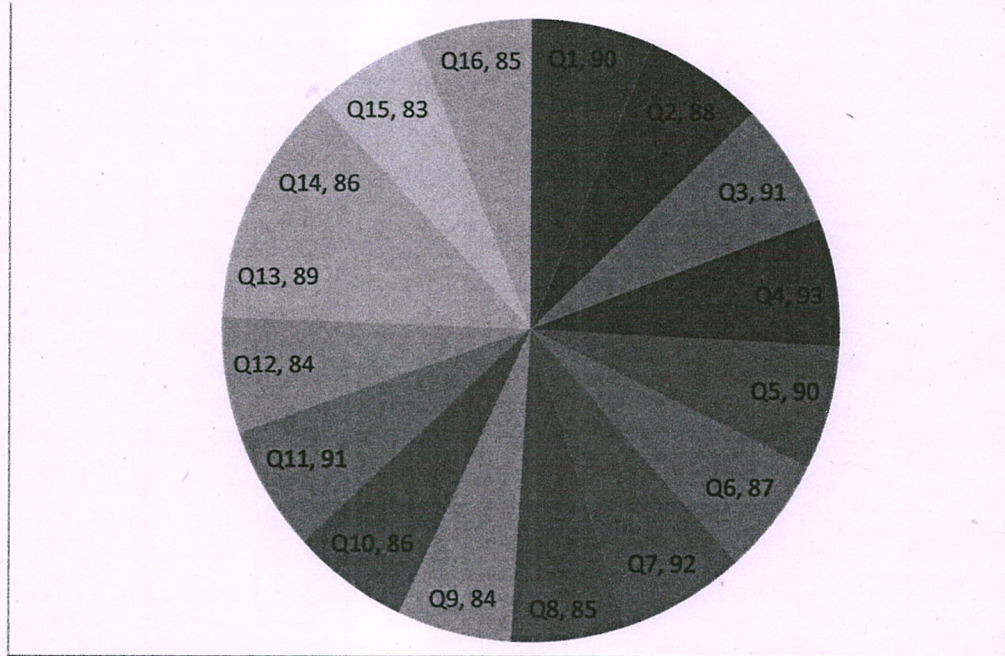
Q.NO	DESCRIPTION	AVERAGE	PERCENTAGE
ACADEMIC PERFORMANCE (CURRICULUM)			
1.	The syllabus of the courses that you have studied in relation to the course competencies expected.	3.6	90
2.	The course curriculum framed by university is relevant to the programme and year of study.	3.52	88
3.	The allocation of the hours and credit to the course.	3.65	91
4.	The electives offered in syllabus are in relation to the technological advancement.	3.71	93
5.	Size of syllabus in terms of the load on the student.	3.58	90
6.	The courses in terms of extra learning or self-learning considering the design of the courses.	3.46	87
7.	The evaluation scheme designed for each of the course.	3.69	92
8.	The Syllabus coverage as prescribed by University.	3.38	85
9.	The experiments in the lab courses are relation to the real time application.	3.37	84
10.	The co-curricular activities conducted to bridge the gap between Academic and Industrial needs.	3.42	86
AMBIENCE (INFRASTRUCTURE)			
11.	The alternative source of energy & energy conservation methods adopted by institution.	3.65	91
12.	The management of various types of degradable and non-degradable waste in the college campus.	3.37	84
13.	The technologies for water conservation facility and green campus facility available in the college campus.	3.56	89
14.	The desire friendly and barrier free environment provided by institution.	3.42	86
15.	The ICT facilities available in class room, computing facilities provided by the institution.	3.33	83
16.	The infrastructure facilities available to meet out curricular, co-curricular, extracurricular activities by the institution	3.4	85


 Dr. S. THILAGAVATHI M.E., Ph.D.,
 PRINCIPAL
 SRI BHARATHI ENGINEERING
 COLLEGE FOR WOMEN
 Kaikkurichi - 622 303, Pudukkottai Dt.

**TEACHER FEEDBACK ON ACADEMIC PERFORMANCE & AMBIENCE
ACADEMIC YEAR 2018-2019**



**TEACHER FEEDBACK ON ACADEMIC PERFORMANCE
& AMBIENCE
ACADEMIC YEAR 2018-2019**



Dr. S. THILAGAVATHI, M.E., Ph.D.,
PRINCIPAL
SRI BHARATHI ENGINEERING
COLLEGE FOR WOMEN
Kaikkurchi - 622 303, Pudukkottai Dt.

Principal



SRI BHARATHI ENGINEERING COLLEGE FOR WOMEN

(Approved by AICTE, Affiliated to Anna University, Chennai, India)

Kaikkurichi, Pudukkottai – 622 303

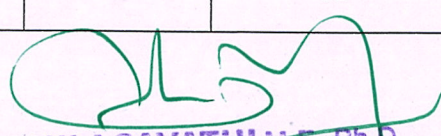
CONSOLIDATED REPORT-ALUMNI FEEDBACK ON ACADEMIC

PERFORMANCE & AMBIENCE

ACADEMIC YEAR 2018-2019

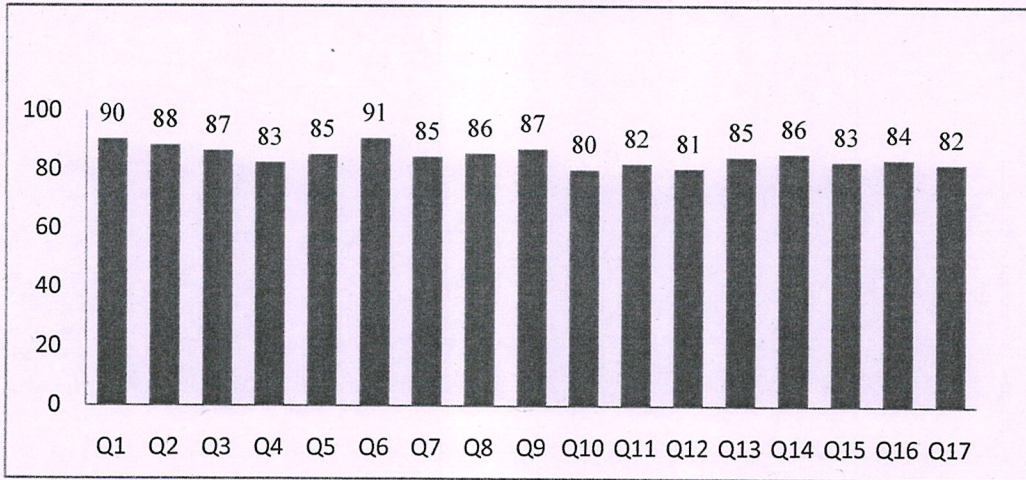
TOTAL ENTRY: 63

Q.NO	DESCRIPTION	AVERAGE	PERCENTAGE
ACADEMIC PERFORMANCE (CURRICULUM)			
1.	The syllabus of the courses that you have studied in relation to the course competencies expected.	3.62	90
2.	The course curriculum framed by university is relevant to the programme and year of study.	3.54	88
3.	The allocation of the hours and credit to the course.	3.46	87
4.	The electives offered in syllabus are in relation to the technological advancement.	3.30	83
5.	Size of syllabus in terms of the load on the student.	3.41	85
6.	The courses in terms of extra learning or self-learning considering the design of the courses.	3.63	91
7.	The evaluation scheme designed for each of the course.	3.38	85
8.	The Syllabus coverage as prescribed by University.	3.43	86
9.	The experiments in the lab courses are relation to the real time application.	3.49	87
10.	The co-curricular activities conducted to bridge the gap between Academic and Industrial needs.	3.21	80
11.	Training, Placement and Campus Recruitment offered by the Institution.	3.29	82
AMBIENCE (INFRASTRUCTURE)			
12.	The alternative source of energy & energy conservation methods adopted by institution.	3.22	81
13.	The management of various types of degradable and non-degradable waste in the college campus.	3.38	85
14.	The technologies for water conservation facility and green campus facility available in the college campus.	3.43	86
15.	The desire friendly and barrier free environment provided by institution.	3.32	83
16.	The ICT facilities available in class room, computing facilities provided by the institution.	3.35	84
17.	The infrastructure facilities available to meet out curricular,co-curricular,extracurricular activities by the institution	3.29	82


 Dr. S. THILAGAVATHI M.E., Ph.D.,
 PRINCIPAL
 SRI BHARATHI ENGINEERING
 COLLEGE FOR WOMEN
 Kaikkurichi - 622 303, Pudukkottai DL

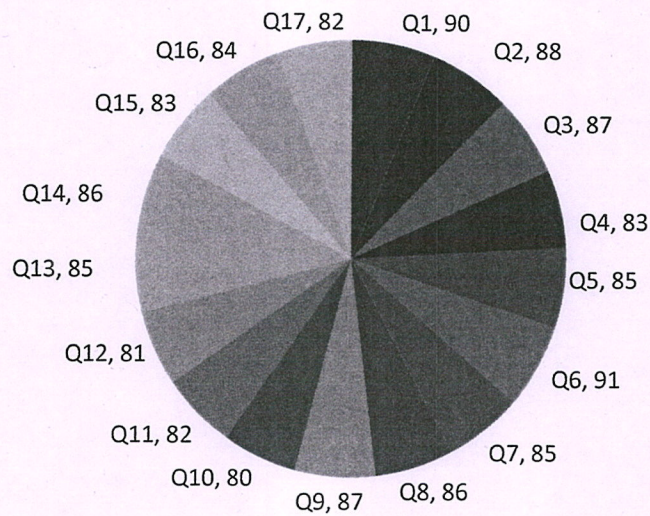
**ALUMNI FEEDBACK ON ACADEMIC PERFORMANCE & AMBIENCE
ACADEMIC YEAR 2018-2019**

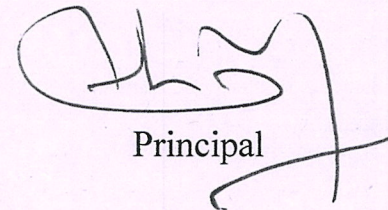
P
E
R
C
E
N
T
A
G
E



QUESTION NUMBER

**ALUMNI FEEDBACK ON ACADEMIC PERFORMANCE & AMBIENCE
ACADEMIC YEAR 2018-2019**




Principal


Dr. S.THILAGAVATHI M.E., Ph.D.,
PRINCIPAL
SRI BHARATHI ENGINEERING
COLLEGE FOR WOMEN
Kaikkurchi - 622 303, Pudukkottai Dt.



SRI BHARATHI ENGINEERING COLLEGE FOR WOMEN

(Approved by AICTE, Affiliated to Anna University, Chennai, India)

Kaikkurichi, Pudukkottai – 622 303

CONSOLIDATED REPORT-PARENT FEEDBACK ON ACADEMIC PERFORMANCE & AMBIENCE ACADEMIC YEAR 2018-2019

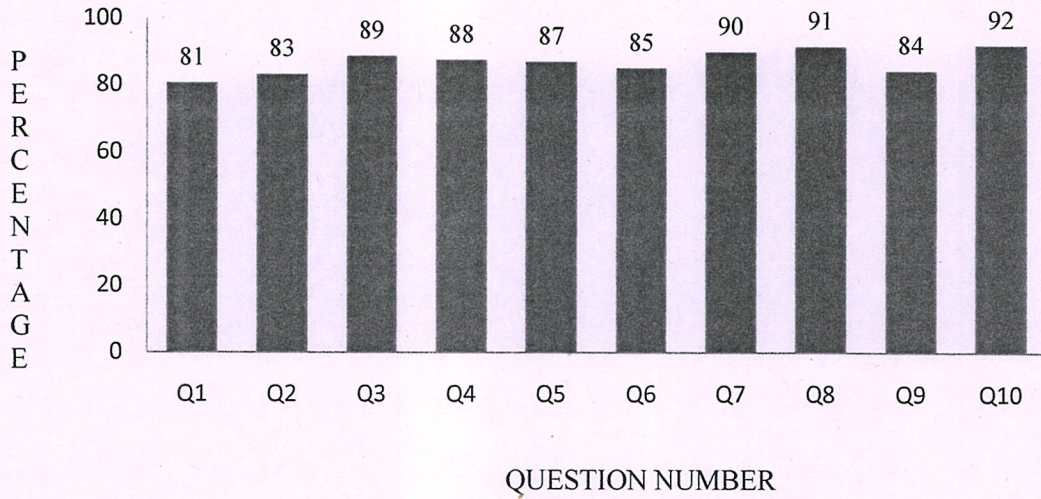
TOTAL ENTRY: 128

Q.NO	DESCRIPTION	AVERAGE	PERCENTAGE
ACADEMIC PERFORMANCE (CURRICULUM)			
1.	The electives offered in syllabus are in relation to the technological advancement.	3.23	81
2.	Size of syllabus in terms of the load on the student.	3.33	83
3.	The courses in terms of extra learning or self-learning considering the design of the courses.	3.55	89
4.	The evaluation scheme designed for each of the course.	3.50	88
AMBIENCE (INFRASTRUCTURE)			
5.	The alternative source of energy & energy conservation methods adopted by institution.	3.48	87
6.	The management of various types of degradable and non-degradable waste in the college campus.	3.40	85
7.	The technologies for water conservation facility and green campus facility available in the college campus.	3.59	90
8.	The desire friendly and barrier free environment provided by institution.	3.66	91
9.	The ICT facilities available in class room, computing facilities provided by the institution.	3.37	84
10.	The infrastructure facilities available to meet out curricular,co-curricular,extracurricular activities by the institution	3.67	92

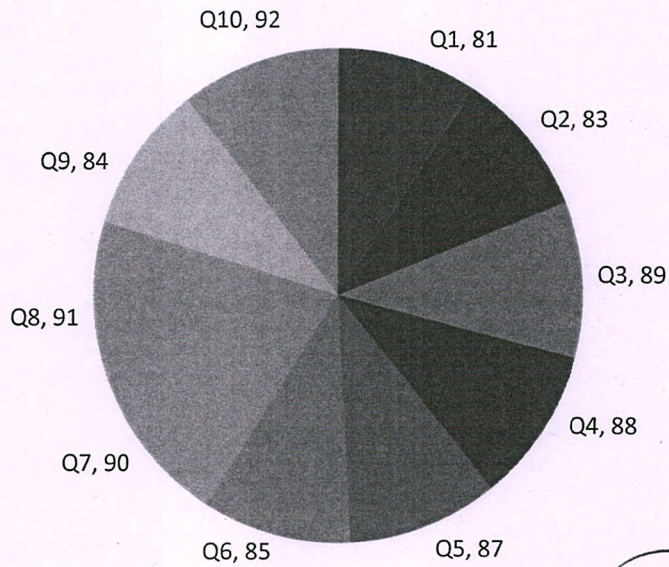
Dr. S. THILAGAVATHI M.E., Ph.D.,
PRINCIPAL

SRI BHARATHI ENGINEERING
COLLEGE FOR WOMEN
Kaikkurichi - 622 303, Pudukkottai Dt.

**PARENT FEEDBACK ON ACADEMIC PERFORMANCE & AMBIENCE
ACADEMIC YEAR 2018-2019**



**PARENT FEEDBACK ON ACADEMIC PERFORMANCE & AMBIENCE
ACADEMIC YEAR 2018-2019**



Principal

Dr. S.THILAGAVATHI M.E., Ph.D.,
PRINCIPAL
SRI BHARATHI ENGINEERING
COLLEGE FOR WOMEN
Kaikkurchi - 622 303, Pudukkottai Dt.



SRI BHARATHI ENGINEERING COLLEGE FOR WOMEN

(Approved by AICTE, Affiliated to Anna University, Chennai, India)

Kaikkurichi, Pudukkottai – 622 303

CONSOLIDATED REPORT-EMPLOYER FEEDBACK ON ACADEMIC

PERFORMANCE & AMBIENCE

ACADEMIC YEAR 2018-2019

TOTAL ENTRY: 73

Q.NO	DESCRIPTION	AVERAGE	PERCENTAGE
ACADEMIC PERFORMANCE (CURRICULUM)			
1.	The syllabus of the courses that you have studied in relation to the course competencies expected.	3.58	89
2.	The course curriculum framed by university is relevant to the programme and year of study.	3.45	86
3.	The allocation of the hours and credit to the course.	3.40	85
4.	Training, Placement and Campus Recruitment offered by the Institution.	3.27	82
AMBIENCE (INFRASTRUCTURE)			
5.	The alternative source of energy & energy conservation methods adopted by institution.	3.25	81
6.	The management of various types of degradable and non-degradable waste in the college campus.	3.36	84
7.	The technologies for water conservation facility and green campus facility available in the college campus.	3.3	83
8.	The desire friendly and barrier free environment provided by institution.	3.19	80
9.	The ICT facilities available in class room, computing facilities provided by the institution.	3.34	84
10.	The infrastructure facilities available to meet out curricular, co-curricular, extracurricular activities by the institution	3.38	85

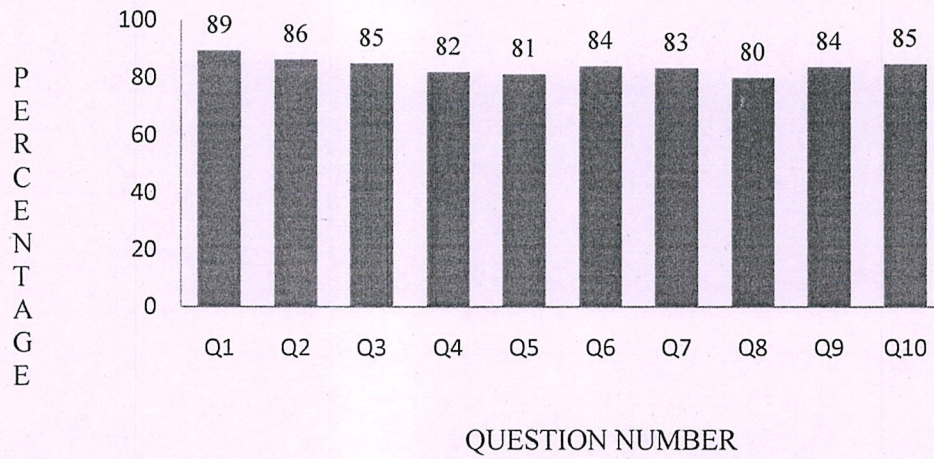
Dr. S. THILAGAVATHI M.E., Ph.D.,

PRINCIPAL

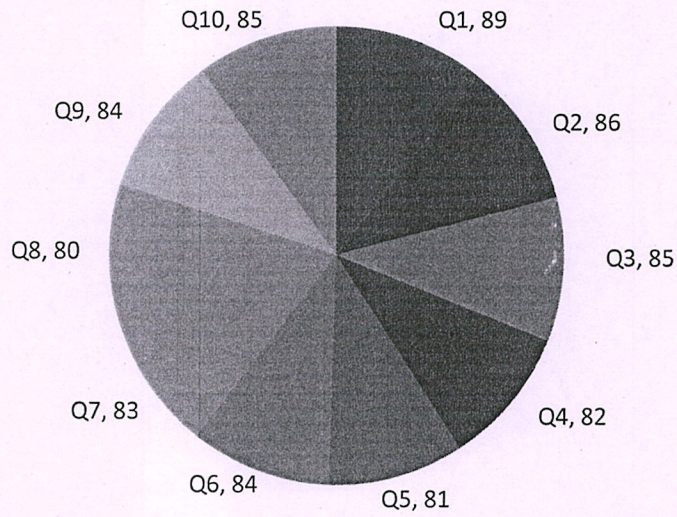
**SRI BHARATHI ENGINEERING
COLLEGE FOR WOMEN**

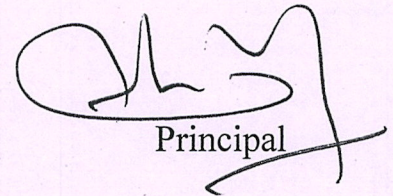
Kaikkurichi - 622 303, Pudukkottai Dt.

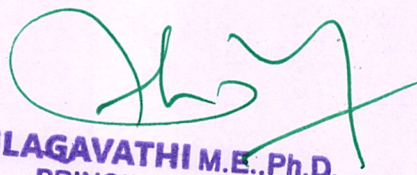
**EMPLOYER FEEDBACK ON ACADEMIC PERFORMANCE & AMBIENCE
ACADEMIC YEAR 2018-2019**



**EMPLOYER FEEDBACK ON ACADEMIC PERFORMANCE & AMBIENCE
ACADEMIC YEAR 2018-2019**




Principal



Dr. S:THILAGAVATHI M.E.,Ph.D.,
PRINCIPAL
SRI BHARATHI ENGINEERING
COLLEGE FOR WOMEN
Kaikkurchi - 622 303, Pudukkottai Dt.



SRI BHARATHI ENGINEERING COLLEGE FOR WOMEN

(Approved by AICTE, New Delhi & Affiliated to Anna University, Chennai)

KAIKKURICHI, PUDUKKOTTAI, 622303

Date: 08/05/2019

STAKEHOLDER FEEDBACK ON ACADEMIC PERFORMANCE & AMBIENCE ACTION TAKEN REPORT-2018-2019

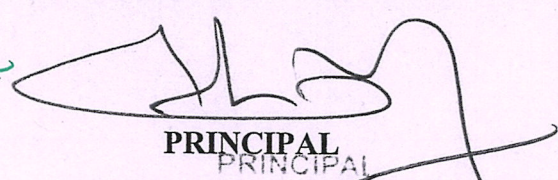
In order to improve the quality initiative, our Institution IQAC collected the feedback about R-2017 curriculum and the syllabus followed in our Institution from the various stake holders (Students, Faculty members, Alumni, Employer, Parents) offered by Anna University Chennai.

As a result, the collected feedback about the curriculum and syllabus were analyzed and based on the suggestion/representation received from the stakeholder in every department for bridging the curricular gap the following topics were suggested to include in Existing Anna University R-2017 Curriculum and Syllabus with recent trends for the benefit of the students community.

S.No	Name of the Degree	Course Code	Name of the Course	Topic to be included	Unit No
1.	B.E-Civil Engineering	CE8021	Structural Dynamics And Earthquake Engineering	Earthquake Resistant Design of Foundation	3
2.	B.E-Computer Science and Engineering	GE8151	Problem Solving and Python Programming	Diversity in Python Programming	5
3.	B.E-Electronics and Communication	EC8701	Antennas and Microwave Engineering	Antenna design using High frequency simulation software	4
4.	B.E-Electrical and Electronics Engineering	EE8551	Microprocessors and Microcontrollers	Basic Industrial Automation	5

In this regard we kindly request you to discuss the above recommendations in the forthcoming Board of Studies (BoS) meeting and do the needful for the betterment of students Community.


Dr. S. THILAGAVATHI M.E., Ph.D.,
PRINCIPAL
SRI BHARATHI ENGINEERING
COLLEGE FOR WOMEN
Kaikkurichi - 622 303, Pudukkottai Dt.


PRINCIPAL
SRI BHARATHI ENGINEERING
COLLEGE FOR WOMEN
KAIKKURICHI - 622 303.
PUDUKKOTTAI DISTRICT



SRI BHARATHI ENGINEERING COLLEGE FOR WOMEN

(Approved by AICTE, New Delhi & Affiliated to Anna University, Chennai)

KAIKKURICHI, PUDUKKOTTAI, 622303

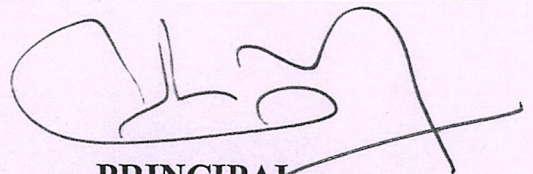
In this regard we sent a letter to Anna University and Requested to discuss the above recommendations in the forthcoming Board of Studies(BoS) meeting for the betterment of students community

In addition to that, the following Value added courses were offered by all Departments of SBECW in the academic year 2018-2019 to enhance the curricular content with recent trend for the benefit of the student community with the approval from Department Advisory Committee (DAC) members.

List of Value added courses conducted to bridge the curricular gap

S.No	VAC Course Name	Department
1.	Earthquake Resistant Design of Foundation	CIVIL
2.	Quality Assurance and Quality control in Civil Engineering	
3.	Diversity in Python Programming.	CSE
4.	Cloud infra structure and services	
5.	Design System Design With Xilinx	ECE
6.	Antenna Design using High frequency simulation software	
7.	Basic Industrial Automation	EEE
8.	PLC Programming	


Dr. S. THILAGAVATHI M.E., Ph.D.,
PRINCIPAL
SRI BHARATHI ENGINEERING
COLLEGE FOR WOMEN
Kaikkurichi - 622 303, Pudukkottai Dt.


PRINCIPAL
PRINCIPAL
SRI BHARATHI ENGINEERING
COLLEGE FOR WOMEN
KAIKKURICHI - 622 303.
PUDUKKOTTAI DISTRICT

SRI BHARATHI ENGINEERING COLLEGE FOR WOMEN

(Approved by AICTE, New Delhi, Affiliated to Anna University, Chennai-25)
Kaikkurichi, Pudukkottai, Tamil Nadu – 622 303, India

Report on Value Added Course

Title:	BASIC INDUSTRIAL AUTOMATION				
Resource Person:	Mr.J.Savari Muthu, Technical Head, Stepup Controls, No:70,TG Anna Nagar, Ayapakkam, Main Road, Ambattur,Chennai-53 salesstepupcontrols@gmail.com				
Date of conduct from :	18.06.2018	To:	22.06.2018	Duration:	30 Hours
Organized Department :	ELECTRICAL AND ELECTRONICS ENGINEERING				
Participant Year:	2/ 3 /4	Semester:	ODD	No. of Students Registered :	36
Venue:	Tutorial Hall-42,SBECW				

Outcome of Value Added Course (VAC)

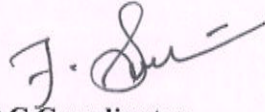
At the end of the Course, Students can able to

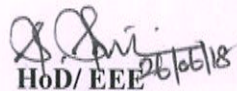
- Explain about the need and benefits of industrial Automation, Automation Hierarchy and its types.
- Describe about the HMI: Introduction, Goal directed design, GUI.
- Obtain insight about the building blocks of PLC, Fixed and modular PLC, Programming instructions, ladder logic and PLC applications.
- Comprehend about Electric drives: types, functions, characteristics, four quadrant operation.
- Demonstrate about AC and DC drive controls, Drives working principle, specifications and its applications.
- Illustrated about Architecture, benefits of SCADA, Interfacing SCADA with PLC, and its applications.

No. of students successfully completed the VAC course is 36 students based on the following assessment process.

Assessment Process

- Students, who are securing **more than 60% on total score** and secured more than 60% in attendance is eligible to receive the certificate for the VAC course conducted.
- Total Score = (0.5 *Attendance in VAC out of 100 percentage + 0.5 *Test mark in VAC out of 100 marks)


VAC Coordinator

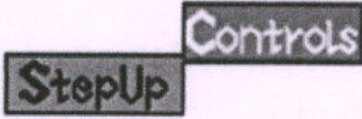

HOD/EEE
HOD E.E.


Principal

SRI BHARATHI ENGINEERING
COLLEGE FOR WOMEN
KAIKKURICHI,
PUDUKKOTTAI - 822 303.

PRINCIPAL
SRI BHARATHI ENGINEERING
COLLEGE FOR WOMEN
KAIKKURICHI - 622 303.
PUDUKKOTTAI DISTRICT


Dr. S.THILAGAVATHI M.E., Ph.D.,
PRINCIPAL
SRI BHARATHI ENGINEERING
COLLEGE FOR WOMEN
Kaikkurichi - 622 303, Pudukkottai Dt.



STEPUP CONTROLS

No:70, TG Anna Nagar, Ayapakkam, Main Road, Ambattur, Chennai-53,
GST:33AWYPG8803FIZA Mail id: salesstepupcontrols@gmail.com

CERTIFICATE OF PARTICIPATION

This is to certify that Mr/Ms **PRIYA.T**, Reg No **912617105003**, **II** year,
Electrical and Electronics Engineering student of Sri Bharathi Engineering
College for Women, Pudukkottai for his/her active participation during the
conduct of the 5 Days Value added Course on "**BASIC INDUSTRIAL
AUTOMATION**" held on 18 - 22 June 2018.

We wish her all success.

For STEPUP CONTROLS,

AUTHORIZED SIGNATORY

TECHNICAL HEAD



Dr **S.THILAGAVATHI M.E., Ph.D.,**
PRINCIPAL
**SRI BHARATHI ENGINEERING
COLLEGE FOR WOMEN**
Kaikkurchi - 622 303, Pudukkottai Dt.

SRI BHARATHI ENGINEERING COLLEGE FOR WOMEN

(Approved by AICTE, New Delhi, Affiliated to Anna University, Chennai-25)
Kaikkurichi, Pudukkottai, Tamil Nadu – 622 303, India

Report on Value Added Course

Title:	PCB Manufacturing and Designing of Basic Circuits				
Resource Person:	Er.V.VEERAPANDIYAN, PCB Developer, Galwin Technology, Trichy-620 002.				
Date of conduct from :	24.06.2019	To:	28.06.2019	Duration:	30 Hours
Organized Department :	Electronics and Communication Engineering				
Participant Year:	2/ 3 /4	Semester:	ODD	No. of Students Registered :	46
Venue:	Seminar Hall, ,Ground Floor,SBECW				

Outcome of Value Added Course (VAC) :At the end of Course ,Students can able to

- Understand basics of PCB designing.
- Design PCB layout of their design.
- Produce PCB of their own circuit.
- Apply advance techniques, skills and modern tools for designing and fabrication of PCBs.
- Apply the knowledge and techniques to fabricate Multilayer, SMT and HDI PCB.
- Understand concepts of Packaging.
- Recognize the technologies used in electronic industry through the practical experience gained in the course.

No. of students successfully completed the VAC course is **46 Students** based on the following Assessment process.

Assessment Process

- Students securing **more than 60% on total score** and secured more than 75% in attendance is eligible to receive the certificate for the VAC course conducted
- Total Score = (0.5 *Attendance in VAC out of 100 percentage + 0.5 *Test mark in VAC out of 100 marks)


VAC Coordinator


HoD/ ECE
HOD / ECE


Principal

SRI BHARATHI ENGINEERING
COLLEGE FOR WOMEN
KAIKKURICHI,
PUDUKKOTTAI - 622 303


Dr. S.THILAGAVATHI M.E.,P
PRINCIPAL
SRI BHARATHI ENGINEERIN
COLLEGE FOR WOMEN
Kaikkurichi - 622 303, Pudukkottai C



GALWIN™
TECHNOLOGY
Beyond Innovation

SRI BHARATHI ENGINEERING COLLEGE FOR WOMEN

(Approved by AICTE | Affiliated to Anna University)


KAIKKURICHI, PUDUKKOTTAI-622303

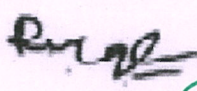


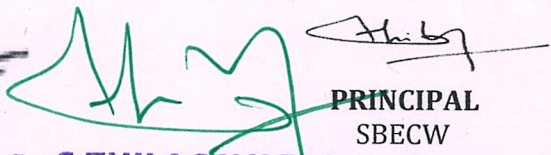
Certificate of completion

VALUE ADDED PROGRAM

This is to Certify that Mr/Ms. **ASMATH HAZEENA.N** of **II ECE** has successfully completed Value Added Course on "PCB Manufacturing and Designing of Basic Circuits" organized by the department of Electronics and Communication Engineering in association with Galwin Technology from 24.06.2019 to 28.06.2019 during the academic year 2019-2020.


Managing Director
Galwin Technology


HoD/ECE
SBECW


PRINCIPAL
SBECW

Dr. S.THILAGAVATHI M.E., Ph.D.,
PRINCIPAL

SRI BHARATHI ENGINEERING
COLLEGE FOR WOMEN
Kaikkurchi - 622 303, Pudukkottai Dt.



SRI BHARATHI ENGINEERING COLLEGE FOR WOMEN
(Approved by AICTE, New Delhi, Affiliated to Anna University, Chennai-25)
Kaikkurichi, Pudukkottai, Tamil Nadu – 622 303, India

Report on Value Added Course

Title:	Quality Assurance and Quality Control in Civil Engineering				
Resource Person:	Er.T.Andrews Livingston, B.E., Site Engineer & Supervisor, Golden Bell Constructions, Trichy.				
Date of conduct from :	10.12.2018	To:	14.12.2018	Duration:	30 Hours
Organized Department :	CIVIL ENGINEERING				
Participant Year:	2, 3, 4	Semester:	EVEN	No. of Students Registered :	40
Venue:	First Floor-Lecture Hall:30				

Outcome of Value Added Course (VAC): At the end of the Course, Student can able to

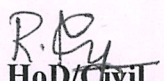
- Improve the management of material for construction project.
- Minimise the repetition of past failure.
- Learn from other people's experiences to avoid pitfalls and to minimize the repetitions of errors.
- Identify specific design, process or decision that reduces or eliminates the potential for failures.
- Explain the availability of corrective actions for typical problems that might impact the costs of a project.
- Assess the quality of the materials used in construction site.

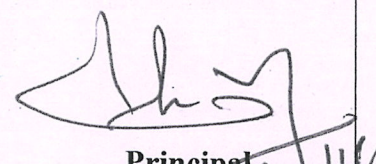
No. of students successfully completed the VAC course is **40 students** based on the following assessment process.

Assessment Process

- Students securing **more than 60% on total score** and secured more than 75% in attendance is eligible to receive the certificate for the VAC course conducted
- Total Score = (0.5 * Attendance in VAC out of 100 percentage + 0.5 * Test mark in VAC out of 100 marks)


VAC Coordinator


HoD/Civil
HOD / CIVIL


Principal
PRINCIPAL

SRI BHARATHI ENGINEERING
COLLEGE FOR WOMEN
KAIKKURICHI,
PUDUKKOTTAI - 622 303

SRI BHARATHI ENGINEERING
COLLEGE FOR WOMEN
KAIKKURICHI - 622 303,
PUDUKKOTTAI DISTRICT


Dr. S. THILAGAVATHI M.E., Ph.D.,
PRINCIPAL
SRI BHARATHI ENGINEERING
COLLEGE FOR WOMEN
Kalkkurchi - 622 303, Pudukkottai Dt.



GOLDEN BELL CONSTRUCTIONS

CERTIFICATE OF PARTICIPATION

Certificate is awarded to Ms.ELAMATHI .G B.E IV year Civil Engineering Sri Bharathi Engineering College for Women for actively participated in 5 days Value Added Course on "Quality Assurance and Quality Control in Civil Engineering" from 10.12.2018 to 14.12.2018.

Dr. S. THILAGAVATHI M.E., Ph.D.,
PRINCIPAL
SRI BHARATHI ENGINEERING
COLLEGE FOR WOMEN
Kalkkurchi - 622 303, Pudukkottai Dt.

Site Engineer,
Golden Bell Constructions.

SRI BHARATHI ENGINEERING COLLEGE FOR WOMEN

(Approved by AICTE, New Delhi, Affiliated to Anna University, Chennai-25)

Kaikkurichi, Pudukkottai, Tamil Nadu – 622 303, India

Report on Value Added Course

Title:	“Cloud infra structure and services”				
Resource Person:	Resource Person 1 : Mr. M. Stephen M.E Master Trainer Apple computers and education		Resource Person 2 : Mr. M.Sathyaraj B.E Master Trainer Apple computers and education		
Date of conduct from :	10.12.2018	To:	14.12.2018	Duration:	30 Hours
Organized Department :	COMPUTER SCIENCE AND ENGINEERING				
Participant Year:	2,3, 4 - (CSE,IT)	Semester:	EVEN	No. of Students Registered :	89
Venue:	Auditorium				

Outcome of Value Added Course (VAC)

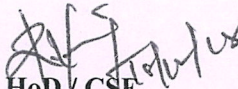
At the end of the VAC course the student can able to

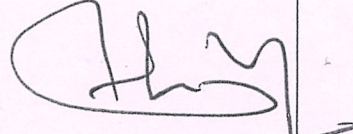
- Explain the core concepts of the cloud computing paradigm:
- Apply the fundamental concepts in datacenters to understand the tradeoffs in power, efficiency and cost by Load balancing approach.
- Discuss system virtualization and outline its role in enabling the cloud computing system model.
- Illustrate the fundamental concepts of cloud storage
- Analyze various cloud programming models

Assessment Process

- Students securing **more than 60% on total score** and secured more than 75% in attendance is eligible to receive the certificate for the VAC course conducted
- Total Score = $(0.5 * \text{Attendance in VAC out of 100 percentage} + 0.5 * \text{Test mark in VAC out of 100 marks})$


VAC Coordinator


HOD / CSE


Principal

HOD / CSE
SRI BHARATHI ENGINEERING
COLLEGE FOR WOMEN
KAIKKURICHI,
PUDUKKOTTAI - 622 303

18/12/18
PRINCIPAL
SRI BHARATHI ENGINEERING
COLLEGE FOR WOMEN
KAIKKURICHI - 622 303,
PUDUKKOTTAI DISTRICT


Dr. S.THILAGAVATHI M.E., Ph.D.,
PRINCIPAL
SRI BHARATHI ENGINEERING
COLLEGE FOR WOMEN
Kaikkurichi - 622 303, Pudukkottai Dt.



SRI BHARATHI

ENGINEERING COLLEGE FOR WOMEN

(Approved by AICTE, New Delhi, Affiliated to Anna University, Chennai-25)
Kaikkurichi, Pudukkottai, Tamil Nadu – 622 303, India

DEPARTMENT OF COMPUTER SCIENCE AND
ENGINEERING

CERTIFICATE OF COMPLETION

This certifies that

ARCHANA.T

III Year IT has successfully completed the Value added course of

CLOUD INFRA STRUCTURE AND SERVICES

from 10.12.2018 to 14.12.2018.

Manager
Apple Computers and Education

Principal
SBECW

Dr. S. THILAGAVATHI M.E., Ph.D.,
PRINCIPAL
SRI BHARATHI ENGINEERING
COLLEGE FOR WOMEN
Kaikkurchi - 622 303, Pudukkottai Dt.