



# SRI BHARATHI

ENGINEERING COLLEGE FOR WOMEN

(Approved by AICTE, New Delhi and Affiliated to Anna University, Chennai)  
Kaikkurichi, Pudukkottai -622 303

[www.sbec.edu.in](http://www.sbec.edu.in)

## NAAC DOCUMENTS



Quality Indicator Frame Work

Criterion – 1

CURRICULAR ASPECTS

Submitted by

**IQAC**

**Internal Quality Assurance Cell**

Sri Bharathi Engineering College for Women



# SRI BHARATHI ENGINEERING COLLEGE FOR WOMEN

(Approved by AICTE, New Delhi and Affiliated to Anna University, Chennai)  
Pudukkottai - Aranthangi Road,  
**Kaikkurichi, Pudukkottai - 622 303.**

Date : .....

## TO WHOMSEVER IT MAY CONCERN

**1.4.1 Institution obtains feedback on the academic performance and ambience of the institution from various stakeholders, such as Students, Teachers, Employers, Alumni etc. and action taken report on the feedback is made available on institutional website.**

*Feedback processes of the institution may be classified as follows:*

- A. Feedback collected, analysed, action taken & communicated to the relevant bodies and feedback hosted on the institutional website*
- B. Feedback collected, analysed and action has been taken and communicated to the relevant bodies*
- C. Feedback collected and analysed*
- D. Feedback collected*
- E. Feedback not collected*

**Response:** *Option A. Feedback collected, analysed, action taken & communicated to the relevant bodies and feedback hosted on the institutional website.*

**PRINCIPAL**

**PRINCIPAL  
SRI BHARATHI ENGINEERING  
COLLEGE FOR WOMEN  
KAIKKURICHI - 622 303.  
PUDUKKOTTAI DISTRICT**



## **SRI BHARATHI ENGINEERING COLLEGE FOR WOMEN**

(Approved by AICTE, New Delhi & Affiliated to Anna University, Chennai)

**KAKKURICHI, PUDUKKOTTAI, 622303**

<b>Criterion 1</b>	<b>Curricular Aspects</b>	<b>100</b>
--------------------	---------------------------	------------

1.4.1 Institution obtains feedback on the academic performance and ambience of the institution from various stakeholders, such as Students, Teachers, Employers, Alumni etc. and action taken report on the feedback is made available on institutional website.

### **2019-2020**

<b>S.NO.</b>	<b>DETAILS</b>	<b>PAGE NO</b>
1.	FEEDBACK ANALYSIS REPORT (Student,Teacher,Alumni,Parent,Employer)	3-13
2.	ACTION TAKEN REPORT	14-16
3.	PROOF OF ACTION TAKEN REPORT	17-25



# SRI BHARATHI ENGINEERING COLLEGE FOR WOMEN

(Approved by AICTE, Affiliated to Anna University, Chennai, India)

Kaikkurichi, Pudukkottai – 622 303

## CONSOLIDATED REPORT - STUDENTS FEEDBACK ON ACADEMIC PERFORMANCE & AMBIENCE ACADEMIC YEAR 2019-2020

TOTAL ENTRY: 216

Q.NO	DESCRIPTION	AVERAGE	PERCENTAGE
<b>ACADEMIC PERFORMANCE (CURRICULUM)</b>			
1.	The syllabus of the courses that you have studied in relation to the course competencies expected.	3.75	94
2.	The course curriculum framed by university is relevant to the programme and year of study.	3.55	89
3.	The allocation of the hours and credit to the course.	3.59	90
4.	The electives offered in syllabus are in relation to the technological advancement.	3.46	86
5.	Size of syllabus in terms of the load on the student.	3.38	84
6.	The courses in terms of extra learning or self-learning considering the design of the courses.	3.47	87
7.	The evaluation scheme designed for each of the course.	3.62	91
8.	The Syllabus coverage as prescribed by University.	3.53	88
9.	The experiments in the lab courses are relation to the real time application.	3.45	86
10.	The co-curricular activities conducted to bridge the gap between Academic and Industrial needs.	3.33	83
<b>AMBIENCE (INFRASTRUCTURE)</b>			
11.	The alternative source of energy & energy conservation methods adopted by institution.	3.54	88
12.	The management of various types of degradable and non-degradable waste in the college campus.	3.42	85
13.	The technologies for water conservation facility and green campus facility available in the college campus.	3.3	82
14.	The desire friendly and barrier free environment provided by institution.	3.26	81
15.	The ICT facilities available in class room, computing facilities provided by the institution.	3.4	85
16.	The infrastructure facilities available to meet out curricular, co-curricular, extracurricular activities by the institution	3.6	90

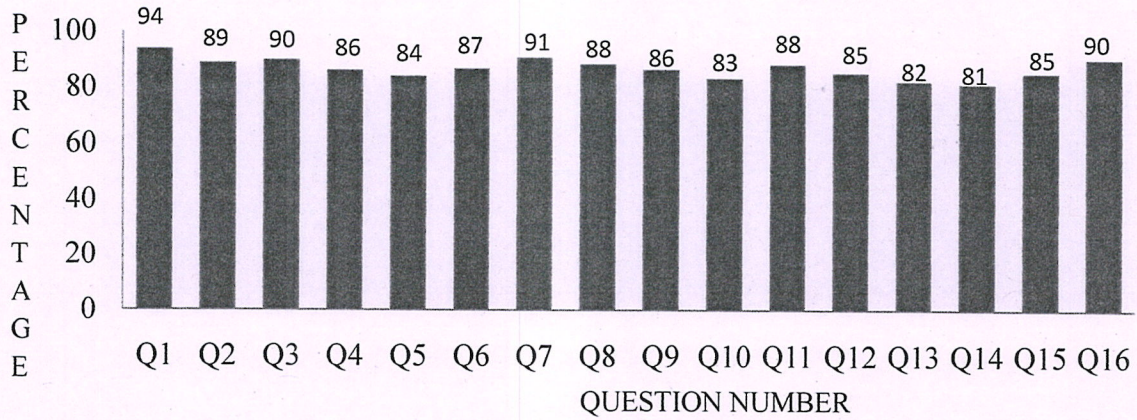
Dr. S. THILAGAVATHI M.E., Ph.D.,

PRINCIPAL

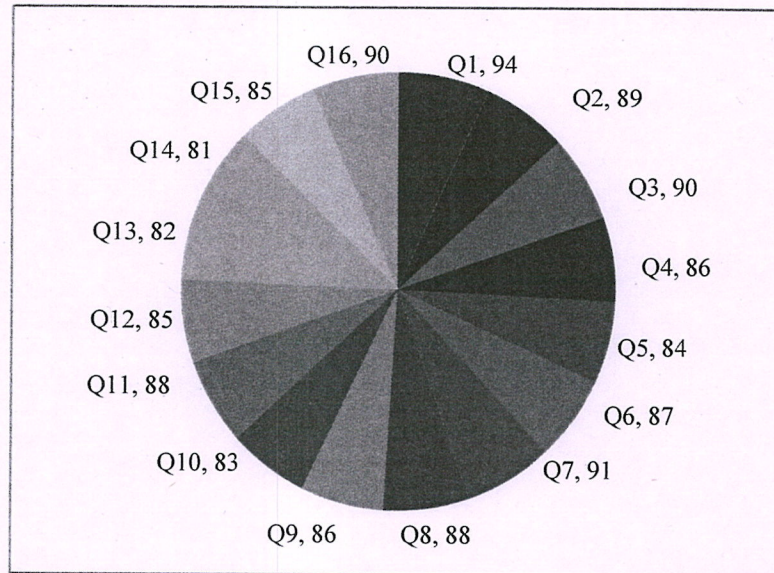
SRI BHARATHI ENGINEERING  
COLLEGE FOR WOMEN

Kaikkurichi - 622 303, Pudukkottai Dt.

**STUDENTS FEEDBACK ON ACADEMIC PERFORMNACE & AMBIENCE  
ACADEMIC YEAR 2019-2020**



**STUDENTS FEEDBACK ON ACADEMIC PERFORMANCE & AMBIENCE  
ACADEMIC YEAR 2019-2020**



Principal

**Dr. S. THILAGAVATHI M.E., Ph.D.,**  
**PRINCIPAL**  
**SRI BHARATHI ENGINEERING**  
**COLLEGE FOR WOMEN**  
 Kaikkurchi - 622 303, Pudukkottai Dt.



# SRI BHARATHI ENGINEERING COLLEGE FOR WOMEN

(Approved by AICTE, Affiliated to Anna University, Chennai, India)

Kaikkurichi, Pudukkottai – 622 303

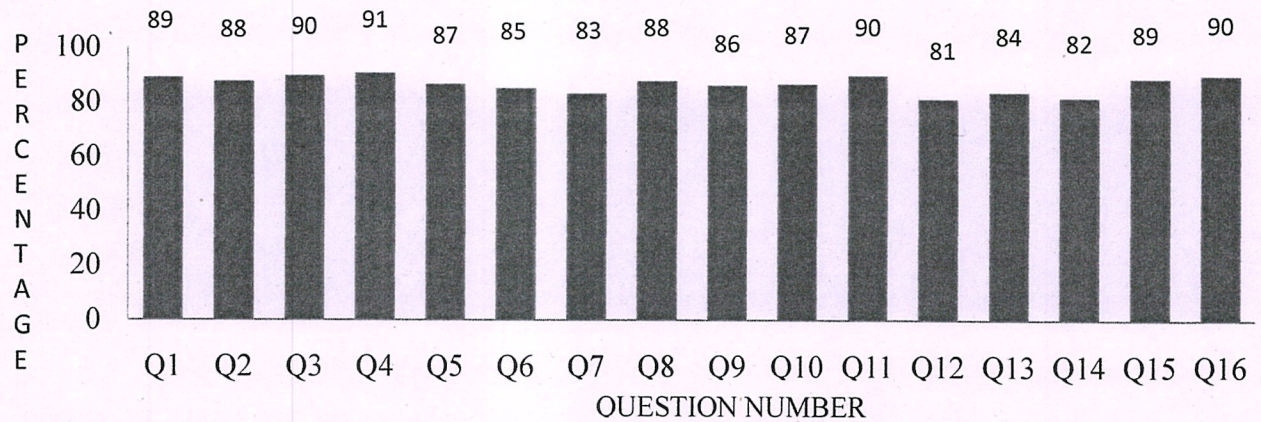
## CONSOLIDATED REPORT-TEACHER FEEDBACK ON ACADEMIC PERFORMANCE & AMBIENCE ACADEMIC YEAR 2019-2020

TOTAL ENTRY:50

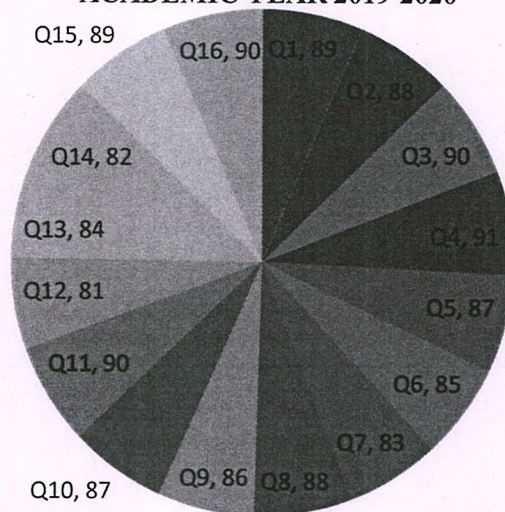
Q.NO	DESCRIPTION	AVERAGE	PERCENTAGE
<b>ACADEMIC PERFORMANCE (CURRICULUM)</b>			
1.	The syllabus of the courses that you have studied in relation to the course competencies expected.	3.56	89
2.	The course curriculum framed by university is relevant to the programme and year of study.	3.5	88
3.	The allocation of the hours and credit to the course.	3.58	90
4.	The electives offered in syllabus are in relation to the technological advancement.	3.62	91
5.	Size of syllabus in terms of the load on the student.	3.46	87
6.	The courses in terms of extra learning or self-learning considering the design of the courses.	3.4	85
7.	The evaluation scheme designed for each of the course.	3.32	83
8.	The Syllabus coverage as prescribed by University.	3.5	88
9.	The experiments in the lab courses are relation to the real time application.	3.44	86
10.	The co-curricular activities conducted to bridge the gap between Academic and Industrial needs.	3.46	87
<b>AMBIENCE (INFRASTRUCTURE)</b>			
11.	The alternative source of energy & energy conservation methods adopted by institution.	3.58	90
12.	The management of various types of degradable and non-degradable waste in the college campus.	3.24	81
13.	The technologies for water conservation facility and green campus facility available in the college campus.	3.34	84
14.	The desire friendly and barrier free environment provided by institution.	3.26	82
15.	The ICT facilities available in class room, computing facilities provided by the institution.	3.54	89
16.	The infrastructure facilities available to meet out curricular, co-curricular, extracurricular activities by the institution	3.58	90

Dr. S. THILAGAVATHI M.E., Ph.D.,  
PRINCIPAL  
SRI BHARATHI ENGINEERING  
COLLEGE FOR WOMEN  
Kaikkurichi - 622 303, Pudukkottai Dt.

**TEACHER FEEDBACK ON ACADEMIC PERFORMNACE & AMBIENCE  
ACADEMIC YEAR 2019-2020**



**TEACHER FEEDBACK ON ACADEMIC PERFORMANCE  
& AMBIENCE  
ACADEMIC YEAR 2019-2020**



Principal

**Dr. S. THILAGAVATHI, M.E., Ph.D.,**  
PRINCIPAL  
SRI BHARATHI ENGINEERING  
COLLEGE FOR WOMEN  
Kaikkurchi - 622 303, Pudukkottai Dt.



# SRI BHARATHI ENGINEERING COLLEGE FOR WOMEN

(Approved by AICTE, Affiliated to Anna University, Chennai, India)

Kaikkurichi, Pudukkottai – 622 303

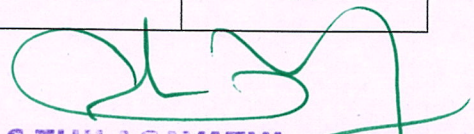
## CONSOLIDATED REPORT-ALUMNI FEEDBACK ON ACADEMIC

### PERFORMANCE & AMBIENCE

ACADEMIC YEAR 2019-2020

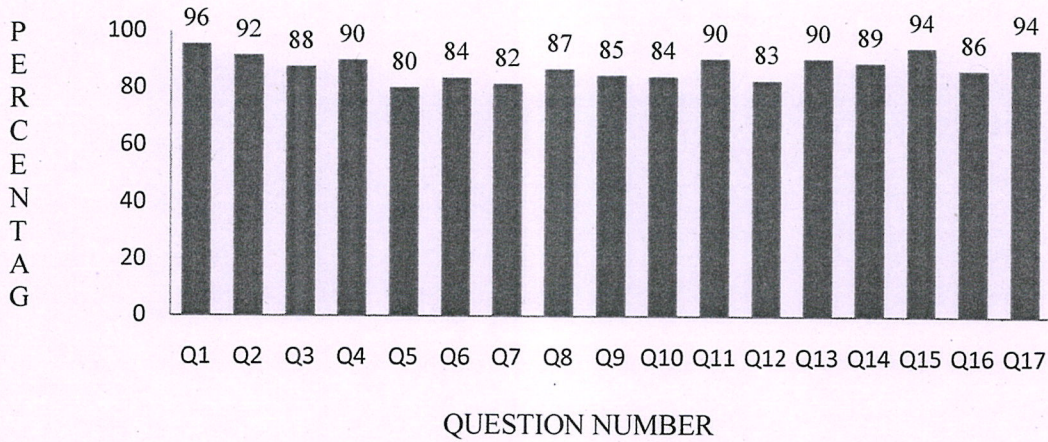
TOTAL ENTRY: 57

Q.NO	DESCRIPTION	AVERAGE	PERCENTAGE
<b>ACADEMIC PERFORMANCE (CURRICULUM)</b>			
1.	The syllabus of the courses that you have studied in relation to the course competencies expected.	3.82	96
2.	The course curriculum framed by university is relevant to the programme and year of study.	3.67	92
3.	The allocation of the hours and credit to the course.	3.51	88
4.	The electives offered in syllabus are in relation to the technological advancement.	3.60	90
5.	Size of syllabus in terms of the load on the student.	3.21	80
6.	The courses in terms of extra learning or self-learning considering the design of the courses.	3.35	84
7.	The evaluation scheme designed for each of the course.	3.26	82
8.	The Syllabus coverage as prescribed by University.	3.47	87
9.	The experiments in the lab courses are relation to the real time application.	3.39	85
10.	The co-curricular activities conducted to bridge the gap between Academic and Industrial needs.	3.37	84
11.	Training, Placement and Campus Recruitment offered by the Institution.	3.61	90
<b>AMBIENCE (INFRASTRUCTURE)</b>			
12.	The alternative source of energy & energy conservation methods adopted by institution.	3.32	83
13.	The management of various types of degradable and non-degradable waste in the college campus.	3.61	90
14.	The technologies for water conservation facility and green campus facility available in the college campus.	3.56	89
15.	The desire friendly and barrier free environment provided by institution.	3.77	94
16.	The ICT facilities available in class room, computing facilities provided by the institution.	3.46	86
17.	The infrastructure facilities available to meet out curricular, co-curricular, extracurricular activities by the institution	3.75	94

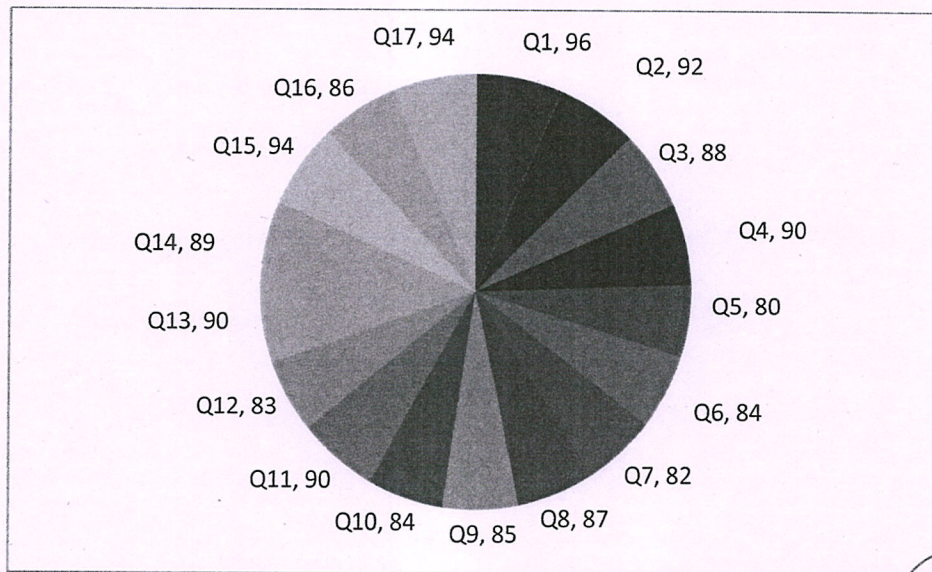
  
Dr. S. THILAGAVATHI M.E., Ph.D.,  
PRINCIPAL  
SRI BHARATHI ENGINEERING  
COLLEGE FOR WOMEN  
Kaikkurichi - 622 303, Pudukkottai Dt.

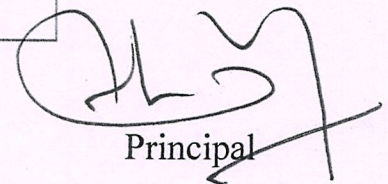


**ALUMNI FEEDBACK ON ACADEMIC PERFORMANCE & AMBIENCE  
ACADEMIC YEAR 2019-2020**



**ALUMNI FEEDBACK ON ACADEMIC PERFORMANCE & AMBIENCE  
ACADEMIC YEAR 2019-2020**



  
 Principal

  
**Dr. S. THILAGAVATHI M.E., Ph.D.,**  
 PRINCIPAL  
 SRI BHARATHI ENGINEERING  
 COLLEGE FOR WOMEN  
 Kaikkurchi - 622 303, Pudukkottai Dt.



# SRI BHARATHI ENGINEERING COLLEGE FOR WOMEN

(Approved by AICTE, Affiliated to Anna University, Chennai, India)

Kaikkurichi, Pudukkottai – 622 303

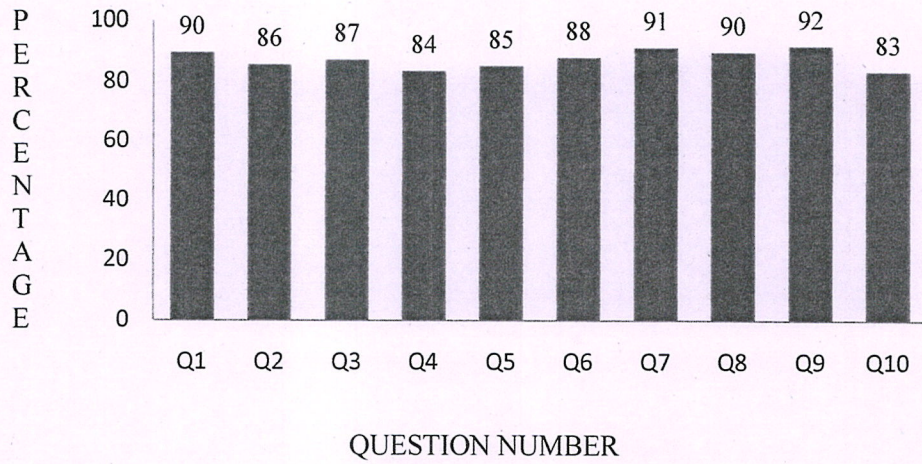
## CONSOLIDATED REPORT-PARENT FEEDBACK ON ACADEMIC PERFORMANCE & AMBIENCE ACADEMIC YEAR 2019-2020

TOTAL ENTRY: 108

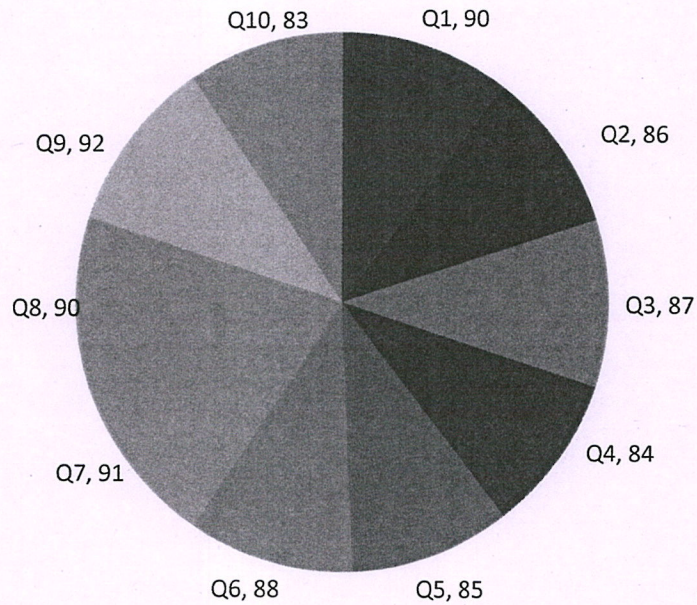
Q.NO	DESCRIPTION	AVERAGE	PERCENTAGE
<b>ACADEMIC PERFORMANCE (CURRICULUM)</b>			
1.	The electives offered in syllabus are in relation to the technological advancement.	3.58	90
2.	Size of syllabus in terms of the load on the student.	3.43	86
3.	The courses in terms of extra learning or self-learning considering the design of the courses.	3.49	87
4.	The evaluation scheme designed for each of the course.	3.34	84
<b>AMBIENCE (INFRASTRUCTURE)</b>			
5.	The alternative source of energy & energy conservation methods adopted by institution.	3.41	85
6.	The management of various types of degradable and non-degradable waste in the college campus.	3.52	88
7.	The technologies for water conservation facility and green campus facility available in the college campus.	3.65	91
8.	The desire friendly and barrier free environment provided by institution.	6.58	90
9.	The ICT facilities available in class room, computing facilities provided by the institution.	3.67	92
10.	The infrastructure facilities available to meet out curricular,co-curricular,extracurricular activities by the institution	3.33	83

  
Dr. S. THILAGAVATHI M.E., Ph.D.,  
PRINCIPAL  
SRI BHARATHI ENGINEERING  
COLLEGE FOR WOMEN  
Kaikkurichi - 622 303, Pudukkottai Dt.

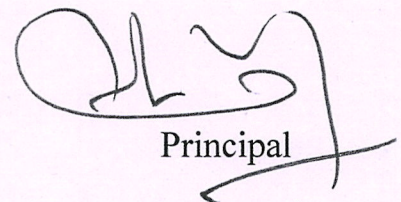
**PARENT FEEDBACK ON ACADEMIC PERFORMANCE & AMBIENCE  
ACADEMIC YEAR 2019-2020**



**PARENT FEEDBACK ON ACADEMIC PERFORMANCE  
& AMBIENCE  
ACADEMIC YEAR 2019-2020**



  
**Dr. S. THILAGAVATHI M.E., Ph.D.,**  
 PRINCIPAL  
 SRI BHARATHI ENGINEERING  
 COLLEGE FOR WOMEN  
 Kaikkurchi - 622 303, Pudukkottai Dt.

  
 Principal



## SRI BHARATHI ENGINEERING COLLEGE FOR WOMEN

(Approved by AICTE, Affiliated to Anna University, Chennai, India)

Kaikkurichi, Pudukkottai – 622 303

### CONSOLIDATED REPORT-EMPLOYER FEEDBACK ON ACADEMIC

#### PERFORMANCE & AMBIENCE

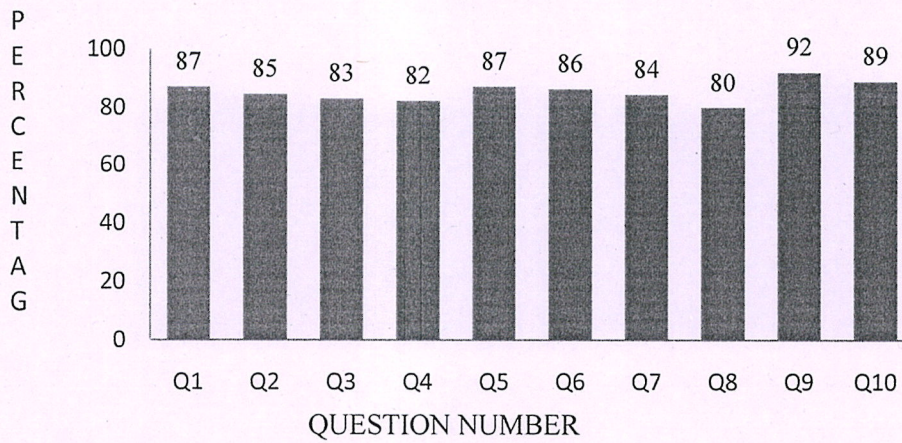
#### ACADEMIC YEAR 2019-2020

TOTAL ENTRY: 62

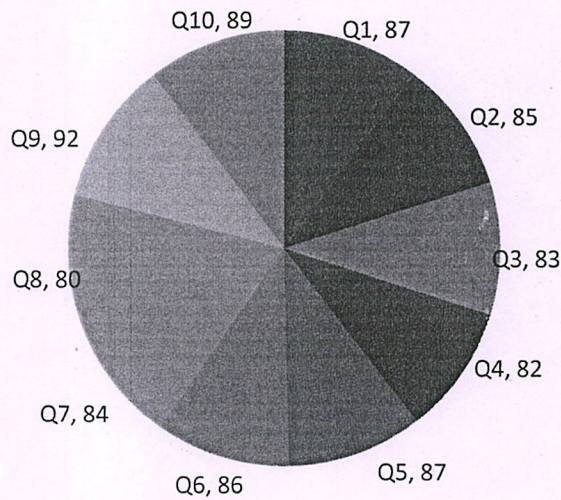
Q.NO	DESCRIPTION	AVERAGE	PERCENTAGE
<b>ACADEMIC PERFORMANCE (CURRICULUM)</b>			
1.	The syllabus of the courses that you have studied in relation to the course competencies expected.	3.48	87
2.	The course curriculum framed by university is relevant to the programme and year of study.	3.39	85
3.	The allocation of the hours and credit to the course.	3.32	83
4.	Training, Placement and Campus Recruitment offered by the Institution.	3.29	82
<b>AMBIENCE (INFRASTRUCTURE)</b>			
5.	The alternative source of energy & energy conservation methods adopted by institution.	3.48	87
6.	The management of various types of degradable and non-degradable waste in the college campus.	3.45	86
7.	The technologies for water conservation facility and green campus facility available in the college campus.	3.47	84
8.	The desire friendly and barrier free environment provided by institution.	3.19	80
9.	The ICT facilities available in class room, computing facilities provided by the institution.	3.66	92
10.	The infrastructure facilities available to meet out curricular, co-curricular, extracurricular activities by the institution	3.55	89

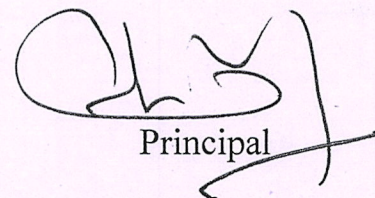
  
**Dr. S. THILAGAVATHI M.E., Ph.D.,**  
PRINCIPAL  
SRI BHARATHI ENGINEERING  
COLLEGE FOR WOMEN  
Kaikkurichi - 622 303, Pudukkottai Dt.

**EMPLOYER FEEDBACK ON ACADEMIC PERFORMANCE & AMBIENCE**



**EMPLOYER FEEDBACK ON ACADEMIC PERFORMANCE & AMBIENCE  
ACADEMIC YEAR 2019-2020**



  
Principal

  
**Dr. S. THILAGAVATHI M.E., Ph.D.,**  
PRINCIPAL  
SRI BHARATHI ENGINEERING  
COLLEGE FOR WOMEN  
Kaiknurchi - 622 303, Pudukkottai DL.



# SRI BHARATHI ENGINEERING COLLEGE FOR WOMEN

(Approved by AICTE, New Delhi & Affiliated to Anna University, Chennai)

**KAIKKURICHI, PUDUKKOTTAI, 622303**

Date: 21/02/2020

## STAKEHOLDER FEEDBACK ON ACADEMIC PERFORMANCE & AMBIENCE ACTION TAKEN REPORT-2019-2020

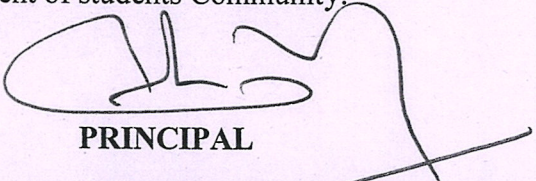
In order to improve the quality initiative, our Institution IQAC collected the feedback about R-2017 curriculum and the syllabus followed in our Institution from the various stake holders (Students, Faculty members, Alumni, Employer, Parents) offered by Anna University Chennai.

As a result, the collected feedback about the curriculum and syllabus were analyzed and based on the suggestion/representation received from the stakeholder in every department for bridging the curricular gap the following topics were suggested to include in Existing Anna University R-2017 Curriculum and Syllabus with recent trends for the benefit of the students community.

S.No	Name of the Degree	Course Code	Course Name	Topic to be included	Unit No
1.	B.E-Civil Engineering	CE8018	Geo-Environmental Engineering	Soil Pollution and Restoration	2
2.	B.E-Computer Science and Engineering	CS8392	Object Oriented Programming	JAVA Programming using Racker Hang	4
3.	B.E-Electronics and Communication	EC8691	Microprocessors and Microcontrollers	Learning Arduino Platform and it uses	4
4.	B.E-Electrical and Electronics Engineering	EE8552	Power Electronics	Design and control of solar Panel	2

In this regard we kindly request you to discuss the above recommendations in the forthcoming Board of Studies (BoS) meeting and do the needful for the betterment of students Community.

  
Dr. S. THILAGAVATHI M.E., Ph.D.,  
PRINCIPAL  
SRI BHARATHI ENGINEERING  
COLLEGE FOR WOMEN  
Kaikkurichi - 622 303, Pudukkottai Dt.

  
PRINCIPAL  
PRINCIPAL  
SRI BHARATHI ENGINEERING  
COLLEGE FOR WOMEN  
KAIKKURICHI - 622 303.  
PUDUKKOTTAI DISTRICT



## SRI BHARATHI ENGINEERING COLLEGE FOR WOMEN

(Approved by AICTE, New Delhi & Affiliated to Anna University, Chennai)

**KAIKKURICHI, PUDUKKOTTAI, 622303**

In this regard we sent a letter to Anna University and Requested to discuss the above recommendations in the forthcoming Board of Studies (BoS) meeting for the betterment of students community.

In addition to that, the following Value added courses were offered by all Departments of SBECW in the academic year 2019-2020 to enhance the curricular content with recent trend for the benefit of the student community with the approval from various Department.

### List of Value added courses conducted to bridge the curricular gap

S.No	VAC Course Name	Department
1.	Corrosion of RC Structures	CIVIL
2.	Soil Pollution and Restoration	
3.	JAVA Programming using hacker Rank	CSE
4.	Web Designing and Development	
5.	PCB Manufacturing and Designing of Basic circuits	ECE
6.	Learning Arduino Platform and it uses	
7.	Electrical Control Design in Real time applications	EEE
8.	Design,Operation,Control,Monitoring & Maintenances of Solar panel	

**PRINCIPAL**

PRINCIPAL  
SRI BHARATHI ENGINEERING  
COLLEGE FOR WOMEN  
KAIKKURICHI - 622 303.  
PUDUKKOTTAI DISTRICT

**Dr. S. THILAGAVATHI M.E., Ph.D.,**  
PRINCIPAL  
SRI BHARATHI ENGINEERING  
COLLEGE FOR WOMEN  
Kaikkurichi - 622 303, Pudukkottai Dt.

# SRI BHARATHI ENGINEERING COLLEGE FOR WOMEN

(Approved by AICTE, New Delhi, Affiliated to Anna University, Chennai-25)  
Kaikkurichi, Pudukkottai, Tamil Nadu – 622 303, India

## Report on Value Added Course

Title:	<u>Web Designing and Development</u>				
Resource Person:	<b>Resource Person 1 :</b> Mr.Prem Kumar B.E CSE Trainer Notus Soft Solutions		<b>Resource Person 2 :</b> Ms.Karpagam B.E CSE Trainer Notus Soft Solutions		
Date of conduct from :	24.06.2019	To:	28.06.2019	Duration:	30 Hours
Organized Department :	COMPUTER SCIENCE AND ENGINEERING				
Participant Year:	2(CSE), 3,4(CSE,IT)	Semester:	ODD	No. of Students Registered :	87
Venue:	Auditorium				

### Outcome of Value Added Course (VAC)

At the end of the VAC course the student can able to

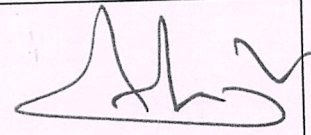
- Build the web applications
- Customize our website and build our theme from scratch
- Create and organize the elements of our website, like images, text, tables, or forms.
- Analyse the websites clearly and made things more accessible
- CSS gave more advanced techniques that present multiple pages more consistently
- Tools for designers, marketing specialists, and many other professionals.

### Assessment Process

- Students securing **more than 60% on total score** and secured more than 75% in attendance is eligible to receive the certificate for the VAC course conducted
- Total Score = (0.5 \*Attendance in VAC out of 100 percentage + 0.5 \*Test mark in VAC out of 100 marks)

  
VAC Coordinator

  
HOD/CSE

  
Principal

PRINCIPAL 02/07/19

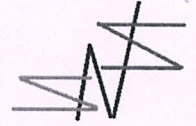
SRI BHARATHI ENGINEERING  
COLLEGE FOR WOMEN  
KAIKKURCHI - 622 303.  
PUDUKKOTTAI DISTRICT

  
Dr. S.THILAGAVATHI M.E., Ph.D.,  
PRINCIPAL  
SRI BHARATHI ENGINEERING  
COLLEGE FOR WOMEN  
Kaikkurichi - 622 303, Pudukkottai Dt.





Notus Soft Solution



# SRI BHARATHI ENGINEERING COLLEGE FOR WOMEN

(Approved by AICTE, New Delhi, Affiliated to Anna University, Chennai-25)  
Kaikkurichi, Pudukkottai, Tamil Nadu – 622 303, India

## Certificate of Completion

This is to certify that Ms.S.MALA of II CSE has completed her Value -added program regarding *WEB DESIGNING AND DEVELOPMENT* for a period of 5 days from 24.06.2019 to 28.06.2019

*Authorised Signature*

NOTUS SOFT SOLUTION

Dr. S.THILAGAVATHI M.E., Ph.D.,

PRINCIPAL

SRI BHARATHI ENGINEERING  
COLLEGE FOR WOMEN

Kaikkurichi - 622 303, Pudukkottai Dt.

*Principal*

SBECW



## SRI BHARATHI ENGINEERING COLLEGE FOR WOMEN

(Approved by AICTE, New Delhi, Affiliated to Anna University, Chennai-25)

Kaikkurichi, Pudukkottai, Tamil Nadu – 622 303, India

### Report on Value Added Course

Title:	Corrosion of RC structures				
Resource Person:	Er.T.Muruganandham B.E., Licensed Building Surveyor and Consultant, TRM Constructions, Trichy.				
Date of conduct from :	24.06.2019	To:	28.06.2019	Duration:	30 Hours
Organized Department :	CIVIL ENGINEERING				
Participant Year:	2, 3, 4	Semester:	ODD	No. of Students Registered :	27
Venue:	First Floor-Lecture Hall:30				

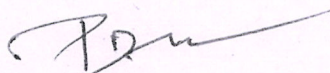
#### Outcome of Value Added Course (VAC): Students are able to

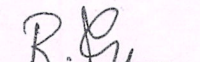
- Know the characteristics of cement and concrete
- Understand the concrete deterioration mechanisms
- Explain the Corrosion of steel in concrete
- Describe the Assessment, diagnosis, repair, and protection of concrete
- Understand the different Methods of protection of reinforced concrete
- Identify the preventive measures for reinforced cement concrete

No. of students successfully completed the VAC course is **27 students** based on the following assessment process.


#### Assessment Process

- Students securing **more than 60% on total score** and secured more than 75% in attendance is eligible to receive the certificate for the VAC course conducted
- Total Score = (0.5 \* Attendance in VAC out of 100 percentage + 0.5 \* Test mark in VAC out of 100 marks)

  
VAC Coordinator

  
HoD/Civil  
HOD / CIVIL

SRI BHARATHI ENGINEERING  
COLLEGE FOR WOMEN  
KAIKKURICHI,  
PUDUKKOTTAI - 622 303

  
PRINCIPAL  
SRI BHARATHI ENGINEERING  
COLLEGE FOR WOMEN  
KAIKKURICHI - 622 303.  
PUDUKKOTTAI DISTRICT



**Dr. S. THILAGAVATHI M.E., Ph.D.,**  
PRINCIPAL  
SRI BHARATHI ENGINEERING  
COLLEGE FOR WOMEN  
Kalkkurchi - 622 303, Pudukkottai Dt.



# TRM CONSTRUCTION

Green Nest Homes

O.A.I.R Complex, JS Garden, Melavaladi, Lalgudi Main Road, Trichy - 621 218  
Er. T. MURUGANANDHAM B.E., Licenced Building Surveyor & Consultant

## CERTIFICATE OF PARTICIPATION

THIS CERTIFICATE IS PROUDLY PRESENTED TO

RAJESWARI J , B.E CIVIL-ENGINEERING, III YEAR

SRI BHARATHI ENGINEERING COLLEGE FOR WOMEN,

*for successfully completing the*

*Value Added Courses on*

*"Corrosion of RC Structures" from 24.06.2019 to 28.06.2019*

A handwritten signature in green ink, appearing to read 'S. Thilagavathi', is written over the printed name of the Principal.

**Dr. S. THILAGAVATHI M.E., Ph.D.,**  
PRINCIPAL  
SRI BHARATHI ENGINEERING  
COLLEGE FOR WOMEN  
Kalkkurchi - 622 303, Pudukkottai Dt.

A handwritten signature in black ink, appearing to read 'T. Muruganandham', is written over the printed name of the Structural Engineer.  

---

STRUCTURAL ENGINEER,  
TRM CONSTRUCTIONS.

# SRI BHARATHI ENGINEERING COLLEGE FOR WOMEN

(Approved by AICTE, New Delhi, Affiliated to Anna University, Chennai-25)  
Kaikkurichi, Pudukkottai, Tamil Nadu – 622 303, India

## Report on Value Added Course

Title:	DESIGNING ,OPERATION ,CONTROL ,MONITORING & MAINTENANCE OF SOLAR PANELS				
Resource Person:	Mr.G.Vikneshwaran, Managing Director, PV Solar Power Tech,2700/3, Pallavangulam,Vadakarai, Opp Athikalathu Alangara Malligai,Pudukottai-01.				
Date of conduct from :	09.Dec.2019	To:	14.Dec.2019	Duration:	36 Hours
Organized Department :	ELECTRICAL AND ELECTRONICS ENGINEERING				
Participant Year:	2/ 3 /4	Semester:	EVEN	No. of Students Registered :	28
Venue:	Tutorial Hall-42,SBECW				

### Outcome of Value Added Course (VAC)

At the end of the Course, Students can able to

- Explain about the Solar Resource and Radiation, PV Cells, Modules and Arrays.
- Describe about the inverters and other system components.
- Obtain insight about designing grid-connected pv systems and sizing a pv system.
- Comprehend about the installing grid-connected PV systems.
- Demonstrate about the final inspection of system installation, Testing, Commissioning, System documentation.
- Illustrate about system operation and maintenance.

No. of students successfully completed the VAC course is 28 students based on the following assessment process.

### Assessment Process

- Students, who are securing **more than 60% on total score** and secured more than 60% in attendance is eligible to receive the certificate for the VAC course conducted.
- Total Score = (0.5 \*Attendance in VAC out of 100 percentage + 0.5 \*Test mark in VAC out of 100 marks)

  
VAC Coordinator

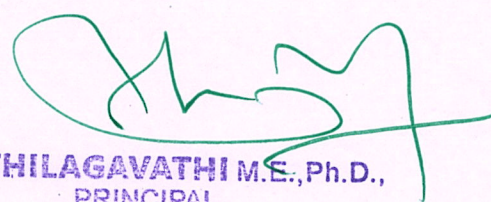
  
HoD/ EEE

  
Principal

HOD EEE

SRI BHARATHI ENGINEERING  
COLLEGE FOR WOMEN  
KAIKKURICHI,  
PUDUKKOTTAI - 622 303.

PRINCIPAL  
SRI BHARATHI ENGINEERING  
COLLEGE FOR WOMEN  
KAIKKURICHI - 622 303.  
PUDUKKOTTAI DISTRICT

  
Dr. S.THILAGAVATHI M.E.,Ph.D.,  
PRINCIPAL  
SRI BHARATHI ENGINEERING  
COLLEGE FOR WOMEN  
Kaikkurichi - 622 303, Pudukkottai Dt.



PV SOLAR POWER TECH

# PV SOLAR POWER TECH

2700/3, Pallavangulam, Vadakarai,  
Opp Athikalathu Alangara Maligai, Pudukottai-01.  
Mail: [pvsolarpowertech@gmail.com](mailto:pvsolarpowertech@gmail.com)  
Website: [www.pvsolarpowertech.com](http://www.pvsolarpowertech.com)

## CERTIFICATE OF PARTICIPATION

This certificate recognizes that Ms. AARTHI G .II year, EEE DEPARTMENT has successfully completed the Value added Course on "DESIGN, OPERATION, CONTROL, MONITORING, MAINTENANCE OF SOLAR PANELS" conducted for 6 Days at Sri Bharathi Engineering College for Women in association with PV Solar Power Tech, Pudukkottai from 09.12.2019 to 14.12.2019.

Dr. **S.THILAGAVATHI** M.E., Ph.D.,  
PRINCIPAL  
SRI BHARATHI ENGINEERING  
COLLEGE FOR WOMEN  
Kaikkurchi - 622 303, Pudukkottai Dt.

**G.VIKNESHWARAN**  
MANAGING DIRECTOR

PRINCIPAL  
SBECW

# SRI BHARATHI ENGINEERING COLLEGE FOR WOMEN

(Approved by AICTE, New Delhi, Affiliated to Anna University, Chennai-25)

Kaikkurichi, Pudukkottai, Tamil Nadu – 622 303, India

## Report on Value Added Course

Title: Learning Arduino Platform and its Uses

Resource Person: **Er.S.DEEPAN,**  
Embedded Developer,  
Galwin Technology,  
Trichy-620 002.

Date of conduct from : **9.12.2019** To: **14.12.2019** Duration: **36 Hours**

Organized Department : **Electronics and Communication Engineering**

Participant Year: **2/ 3 /4** Semester: **EVEN** No. of Students Registered : **46**

Venue: **Seminar Hall, ,Ground Floor, SBECW**

### Outcome of Value Added Course (VAC) :At the end of Course ,Students can able to

- Learn the basics of electronics, including reading schematics
- Recall the basics of sensors, its functioning.
- Execute basic and advanced assembly language programs.
- Learn the ways to interface I/O devices with processor for task sharing.
- Recall the basics of co-processor and its ways to handle float values by its instruction set.
- Recognize the functionality of micro controller, latest version processors and its applications.
- Design a component with realistic constraints, to solve real world engineering problems and analyse the results.
- After the completion of the course, the students will be specialized in Embedded System design using Arduino.

No. of students successfully completed the VAC course is **46 Students** based on the following Assessment process.

### Assessment Process

- Students securing **more than 60% on total score** and secured more than **75%** in attendance is eligible to receive the certificate for the VAC course conducted
- Total Score =  $(0.5 * \text{Attendance in VAC out of 100 percentage} + 0.5 * \text{Test mark in VAC out of 100 marks})$

  
VAC Coordinator

  
HoD/ECE

  
Principal

HOD / ECE  
SRI BHARATHI ENGINEERING  
COLLEGE FOR WOMEN  
KAIKKURICHI,  
PUDUKKOTTAI - 622 303.

  
Dr. S.THILAGAVATHI M.E., Ph.D.  
PRINCIPAL  
SRI BHARATHI ENGINEERING  
COLLEGE FOR WOMEN  
Kaikkurichi - 622 303, Pudukkottai Dt.



**GALWIN™**  
**TECHNOLOGY**  
*Beyond Innovation*

**SRI BHARATHI ENGINEERING COLLEGE FOR WOMEN**  
(Approved by AICTE | Affiliated to Anna University)

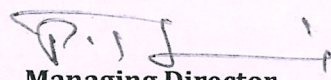
KAIKKURICHI, PUDUKKOTTAI-622303

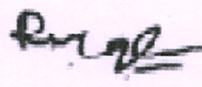



*Certificate of completion*

**VALUE ADDED PROGRAM**

This is to Certify that Mr/Ms. **ATCHAYA.R** of **II ECE** has successfully completed Value Added Course on "Learning Arduino Platform and its Uses" organized by the department of Electronics and Communication Engineering in association with Galwin Technology from 09.12.2019 to 14.12.2019 during the academic year 2019-2020.

  
**Managing Director**  
Galwin Technology

  
**HoD/ECE**  
SBECW

  
**PRINCIPAL**  
SBECW

**Dr. S.THILAGAVATHI M.E., Ph.D.,**  
**PRINCIPAL**  
**SRI BHARATHI ENGINEERING**  
**COLLEGE FOR WOMEN**  
Kaikkurichi - 622 303, Pudukkottai Dt.